



BLACK LIVES MATTER IN ALAMEDA COUNTY:

A DATA-BASED CALL TO ACTION

Originally presented at:
FLO STROUD CONFERENCE on February 6, 2016

TAMMY LEE & DR. MUNTU DAVIS
ALAMEDA COUNTY PUBLIC HEALTH DEPARTMENT



“The most difficult social problem in the matter of Negro health is the peculiar attitude of the nation toward the well-being of the race. There have been few other cases in the history of civilized peoples where human suffering has been viewed with such peculiar indifference.”

W.E.B. DuBois, *The Philadelphia Negro*, 1899

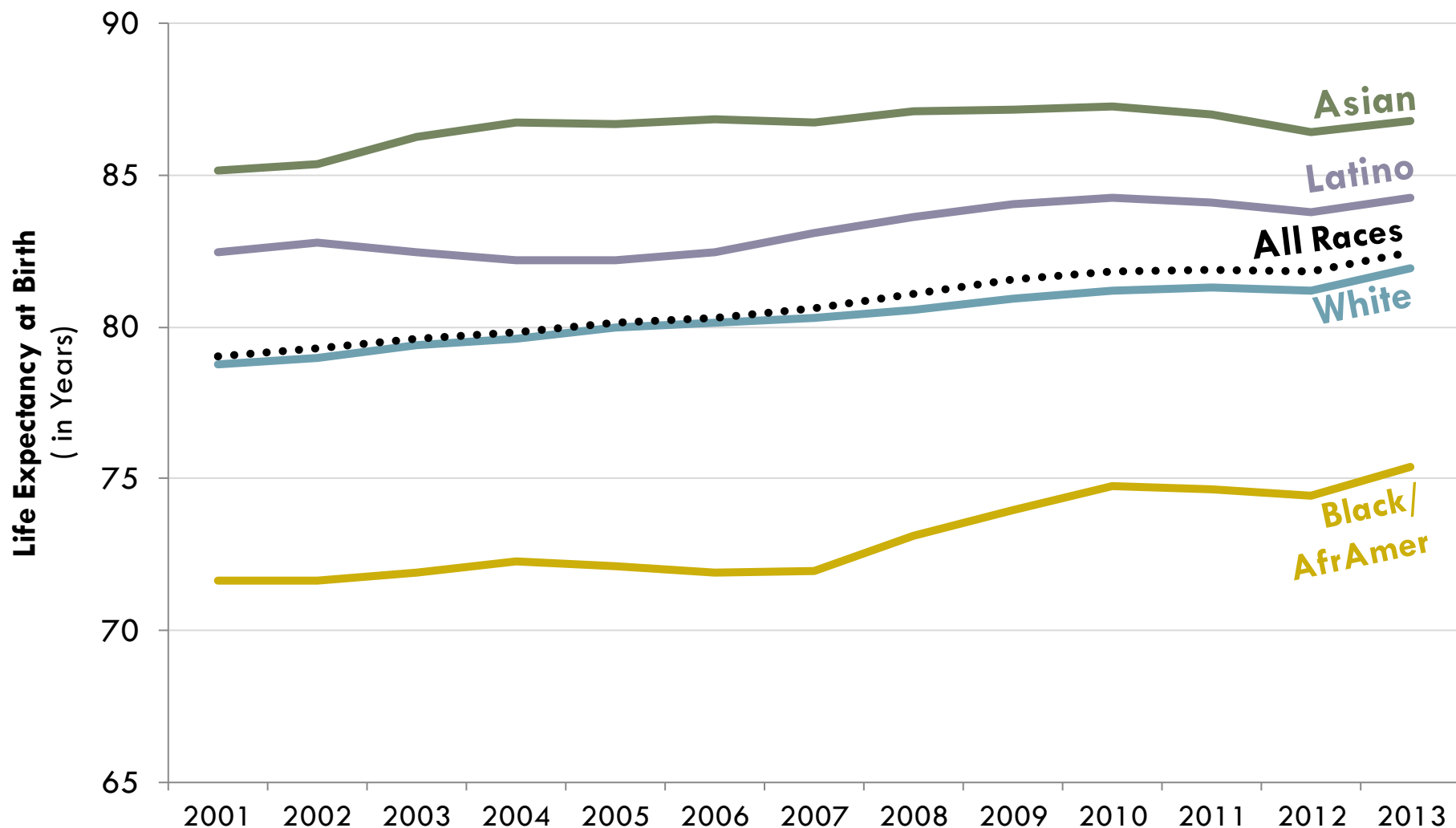


STATE OF AFRICAN AMERICAN HEALTH & HEALTH INEQUITIES



Life Expectancy Trend by Race

Alameda County, 2000-2014*



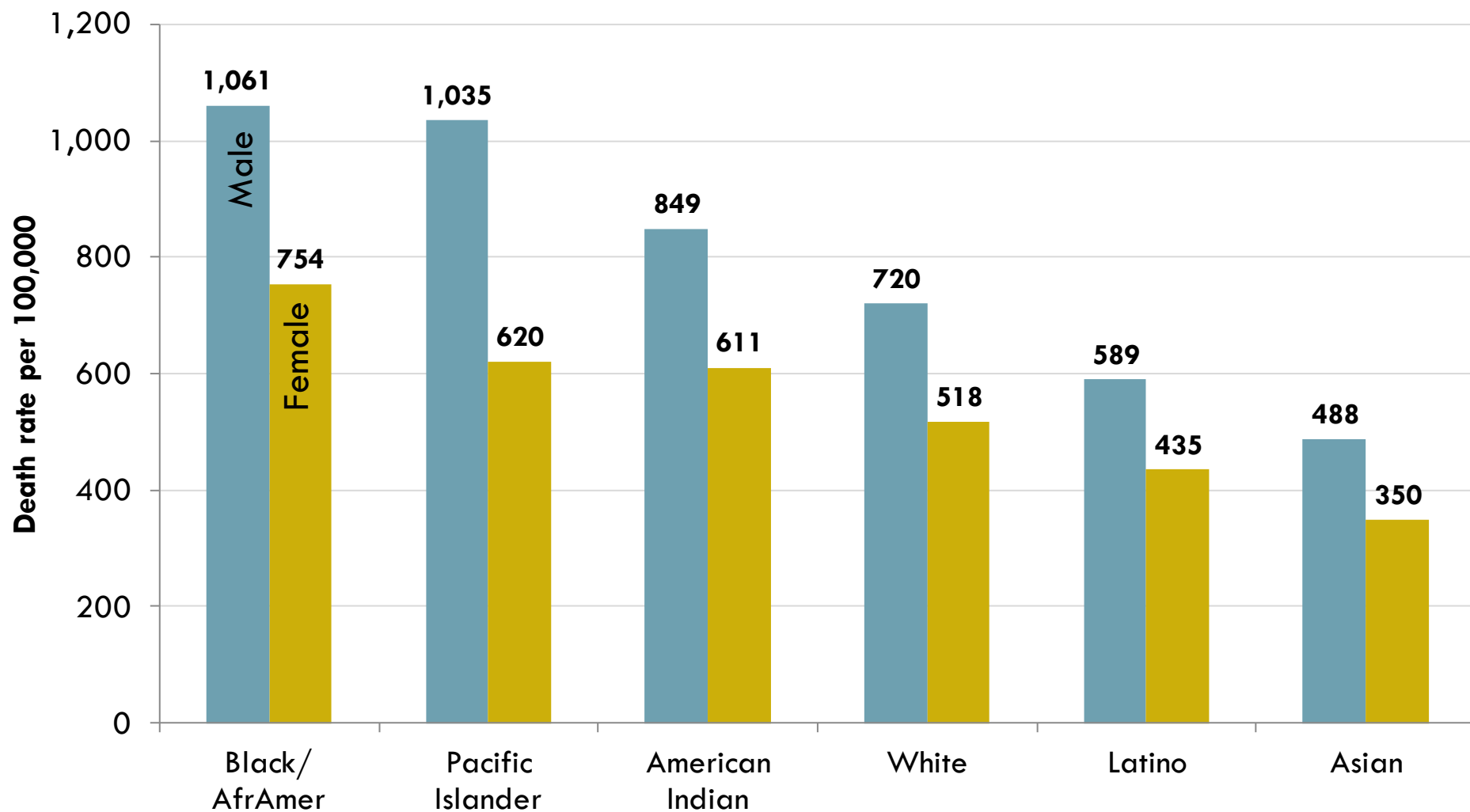
*Trend based on 3-yr rolling average data

Source: Alameda County Vital Statistics files, 2000-2014



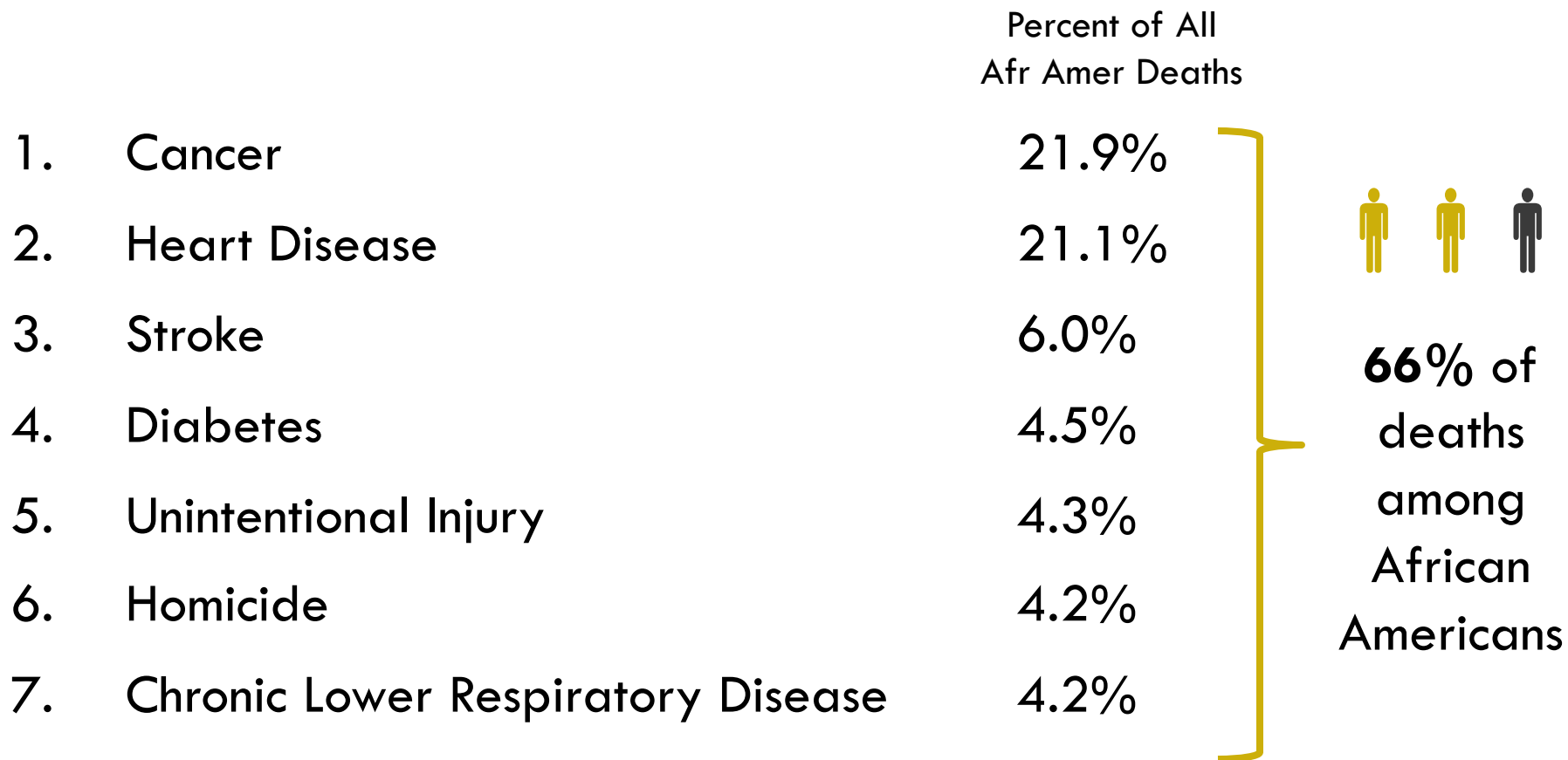
All-Cause Mortality Rates by Race & Gender

Alameda County, 2012-2014



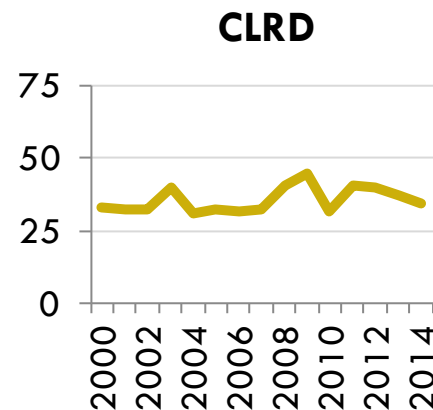
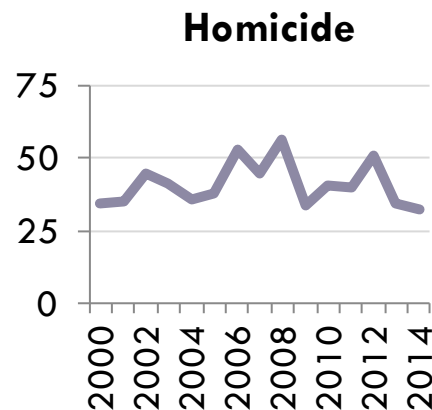
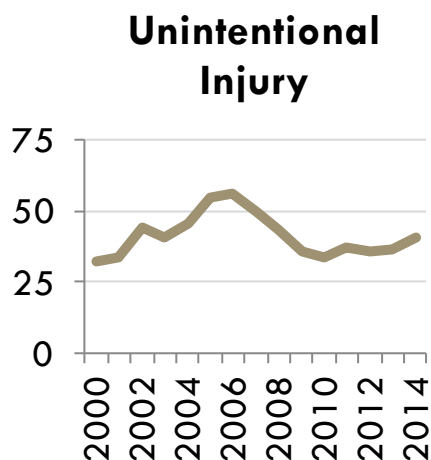
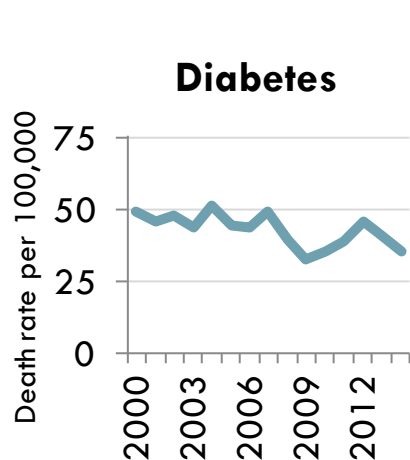
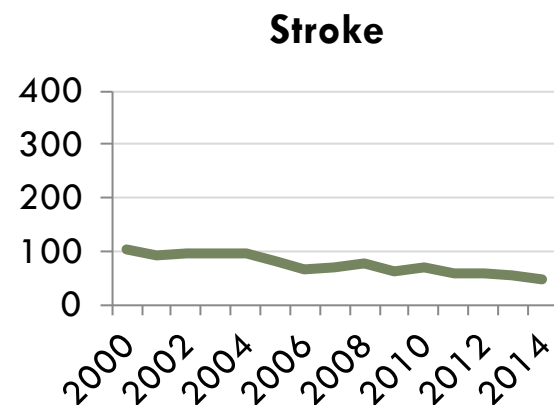
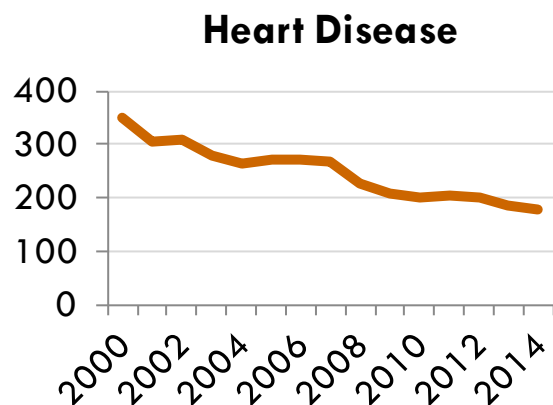
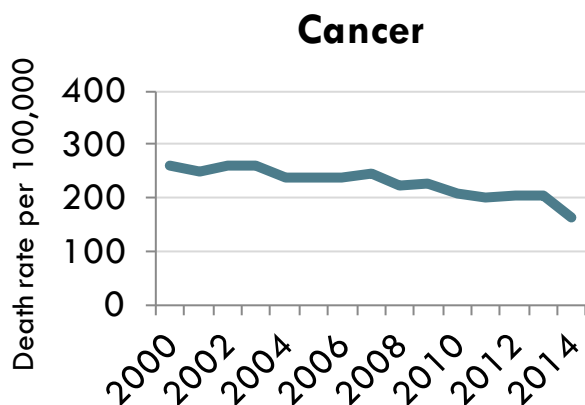
Leading Causes of Death among African Americans

Alameda County, 2012-2014



Trends in Leading Causes of Death among African Americans

Alameda County, 2000-2014



Age-Specific All-Cause Mortality Rates by Race

Alameda County, 2012-2014

Age (in yrs)	Black All-Cause Mortality Rate	White All-Cause Mortality Rate	Black vs. White Rate Ratio
<1	971	327	3.0
1-4	42	17	2.5
5-14	16	7	2.3
15-24	166	46	3.6
25-34	194	60	3.2
35-44	272	113	2.4
45-54	534	260	2.1
55-64	1,356	627	2.2
65-74	2,363	1,530	1.5
75-84	5,273	3,971	1.3
85+	12,421	12,954	1.0



Racial Inequities in Morbidity & Mortality

Alameda County, 2009-2012

INCREASING INEQUITY RATIO
Between African Americans and Lowest Racial Group

HOMICIDE
ASSAULT
HIV **MENTAL ILLNESS**
ASTHMA **Self-Inflicted Injury**
UNINTENTIONAL INJURY
Stroke **Diabetes** **Congestive Heart Failure**
Coronary Heart Disease **CANCER** **INFANT DEATH**

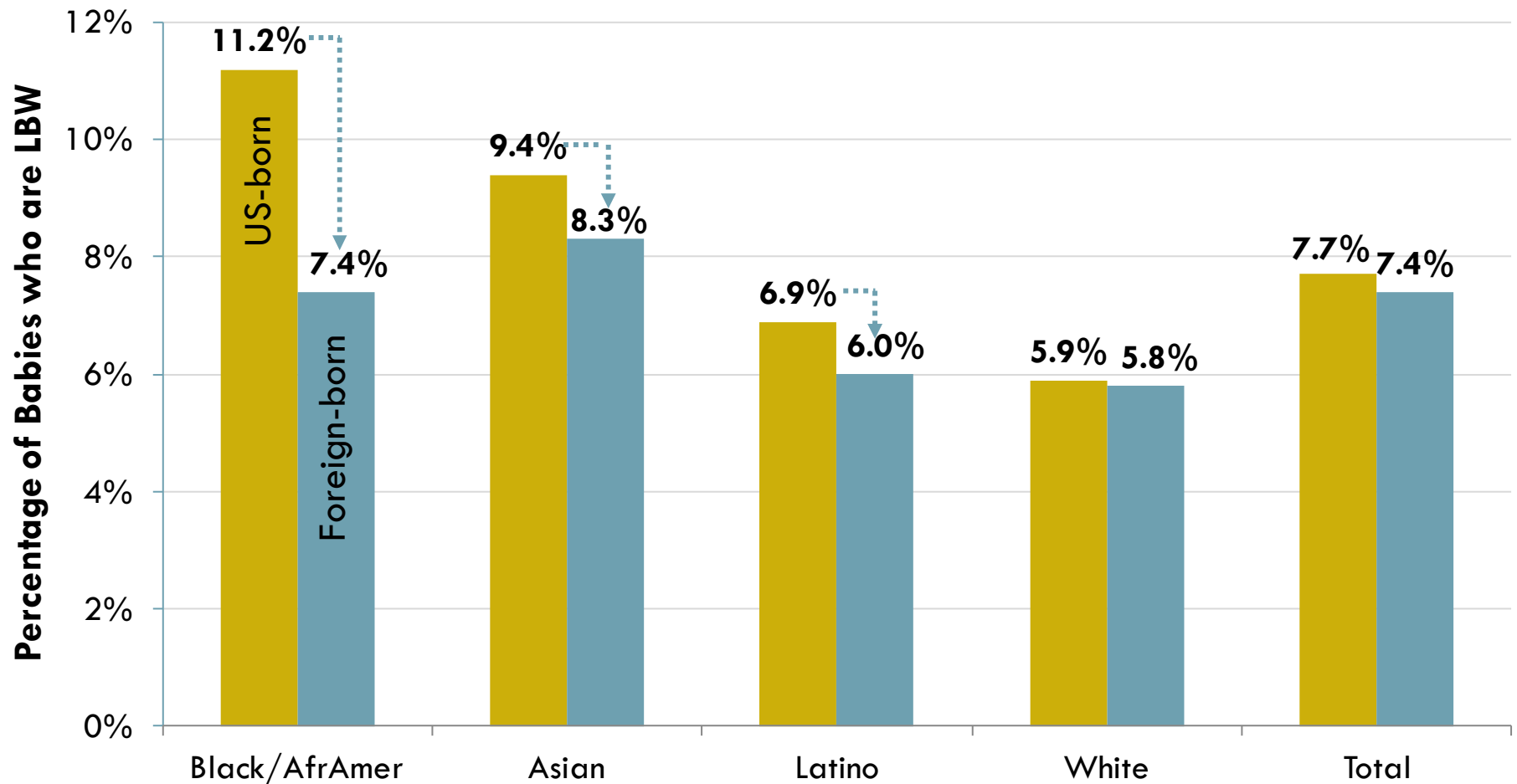


WHAT CAUSES ILL HEALTH & HEALTH INEQUITIES FOR AFRICAN AMERICANS?

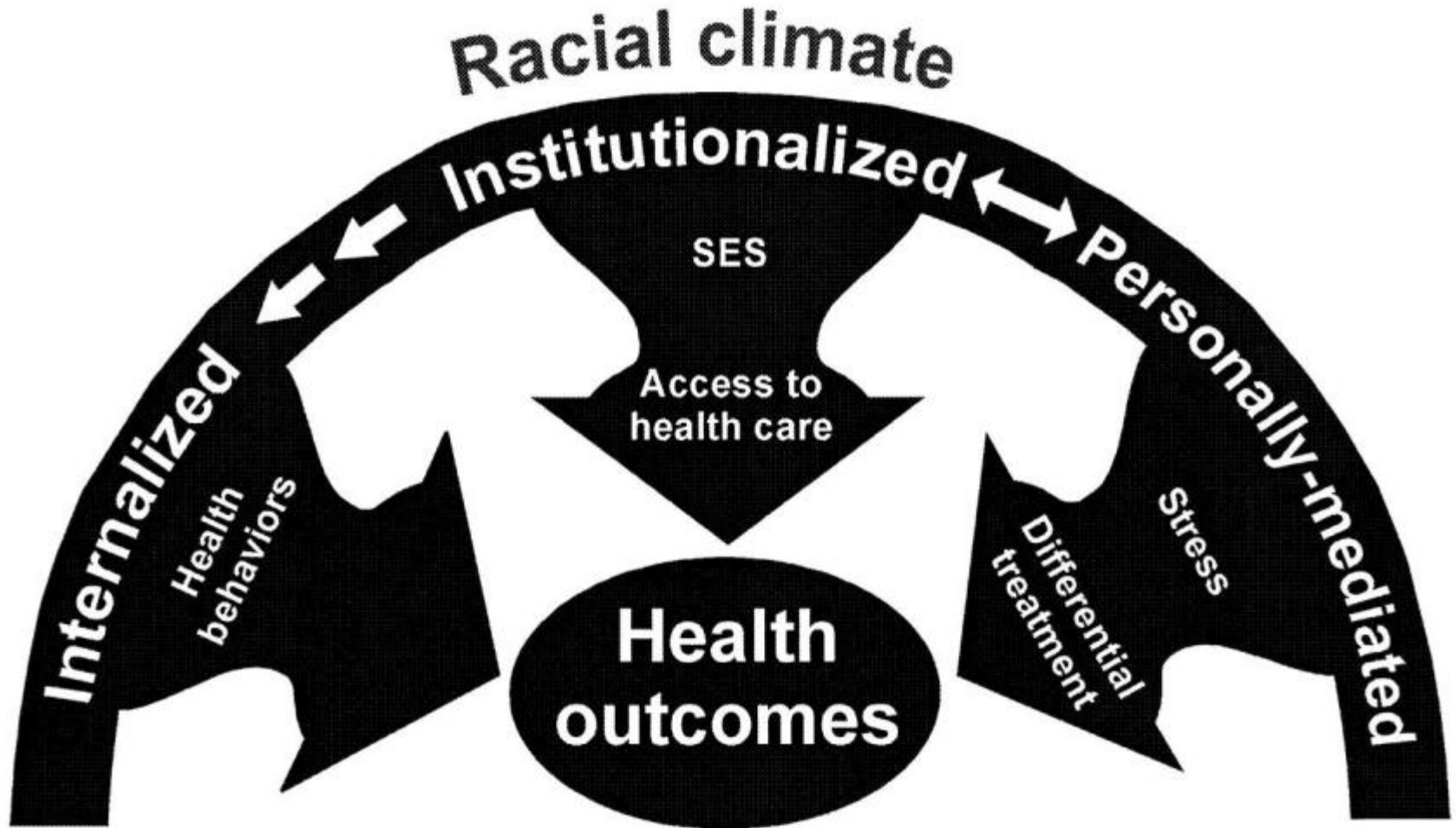


RACISM MATTERS, NOT BIOLOGY

Percentage of Babies who are Low Birth Weight by Mother's Race & Place of Birth Alameda County, 2011-2013



Impacts of Racism on Health



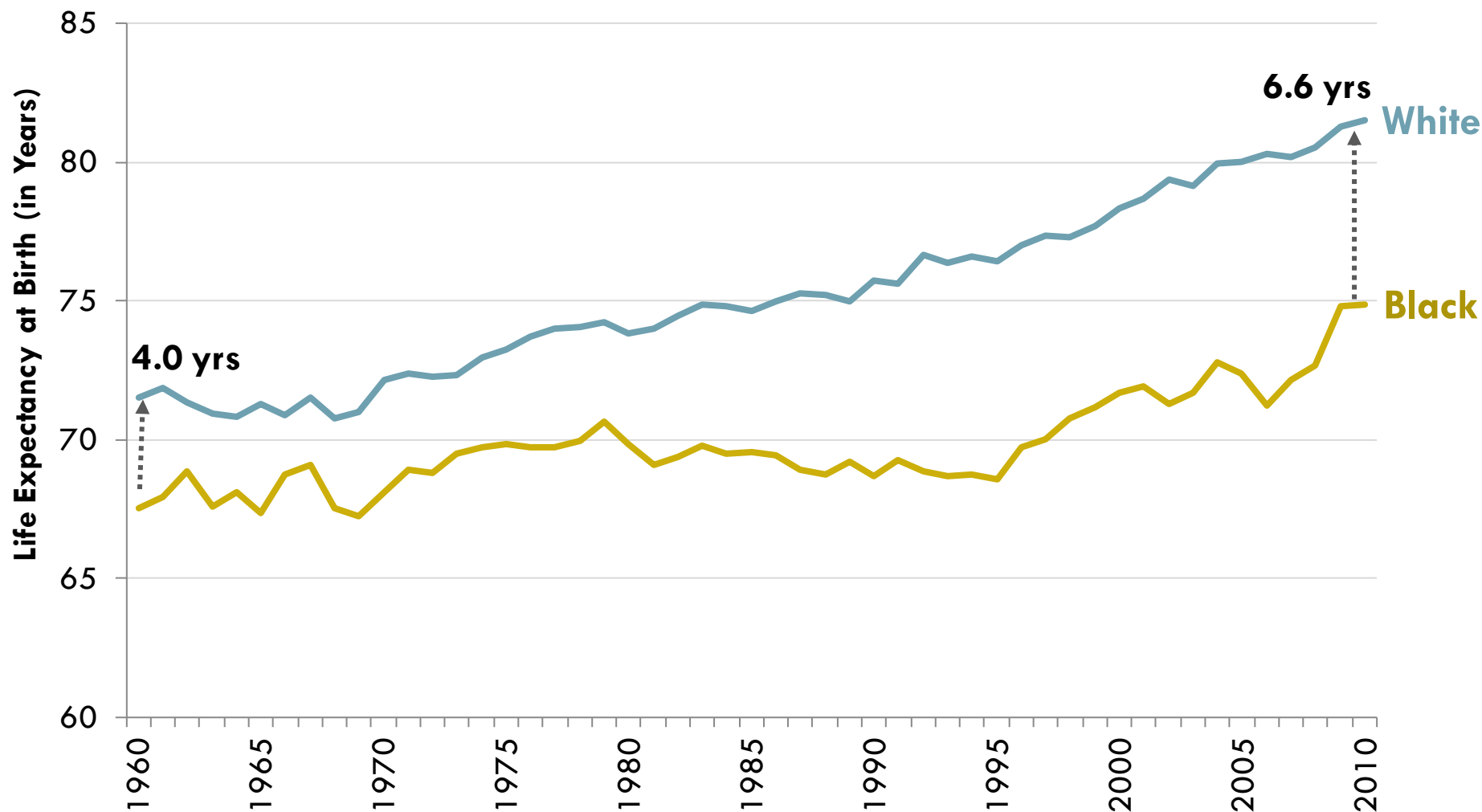
Institutional Racism & Differential Access to Resources that Support Health



SES MATTERS GREATLY

Trends in Black-White Life Expectancy at Birth

Alameda County, 1960-2010



Poverty, Employment, & Education Indicators

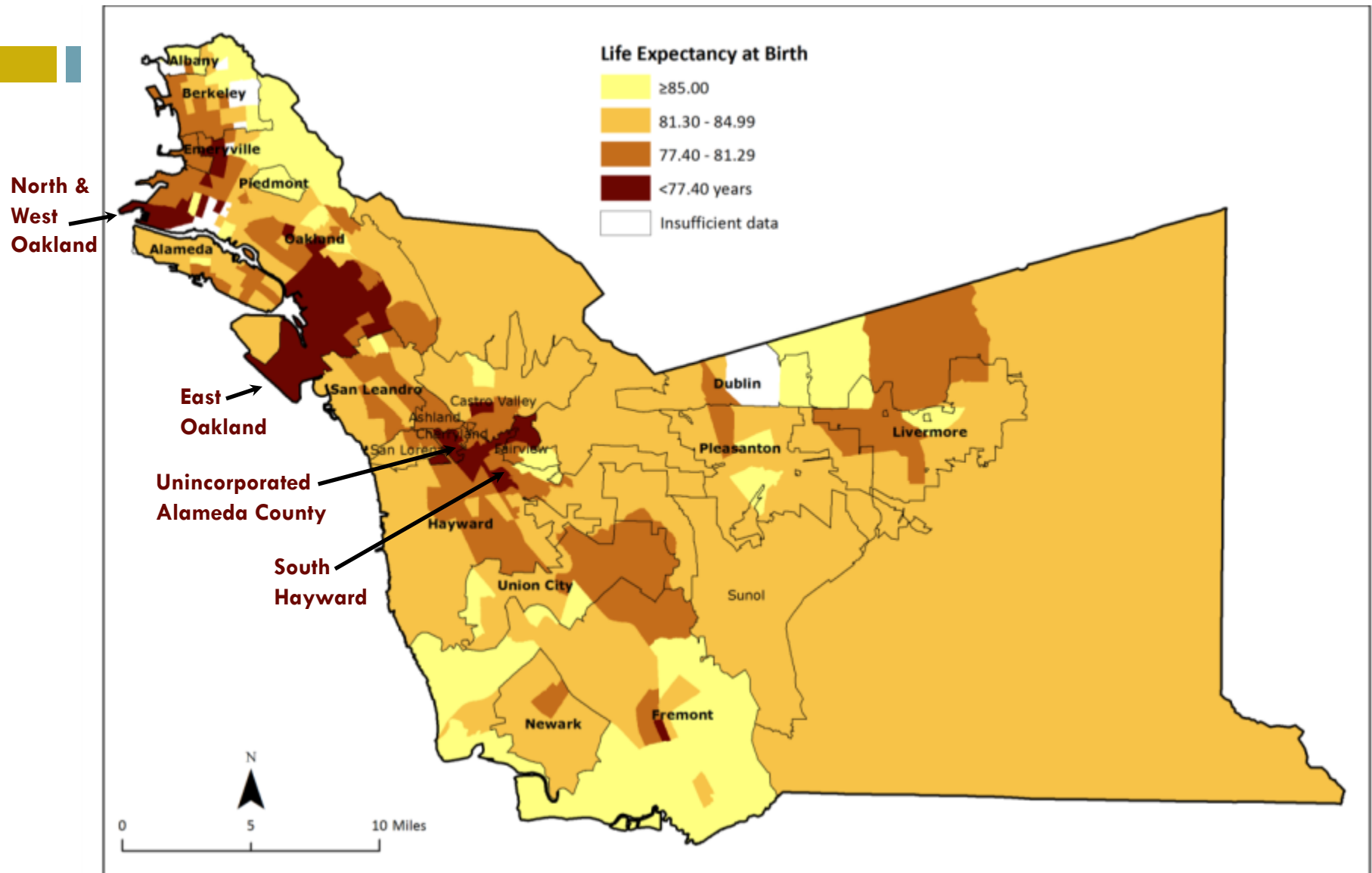
Alameda County, 2013-2014

	Black	White
Poverty	24%	8%
Unemployment	13%	5%
High School Drop-Out		
Males	23%	7%
Females	19%	4%



CONCENTRATED POVERTY AND SEGREGATION MATTER

Life Expectancy by Census Tract



Proportion Living in a High Poverty Neighborhood (where $>20\%$ of residents are poor) by Race

1 in 15 White residents live in **high-poverty neighborhoods**, compared to:



1 in 9 Asians



1 in 4 Latinos



1 in 3 Blacks



Proportion of Poor People Living in an Affluent Neighborhood (where <10% of residents are poor) by Race

1 in 2 poor White residents live in **affluent neighborhoods**, compared to:



1 in 3 poor Asians



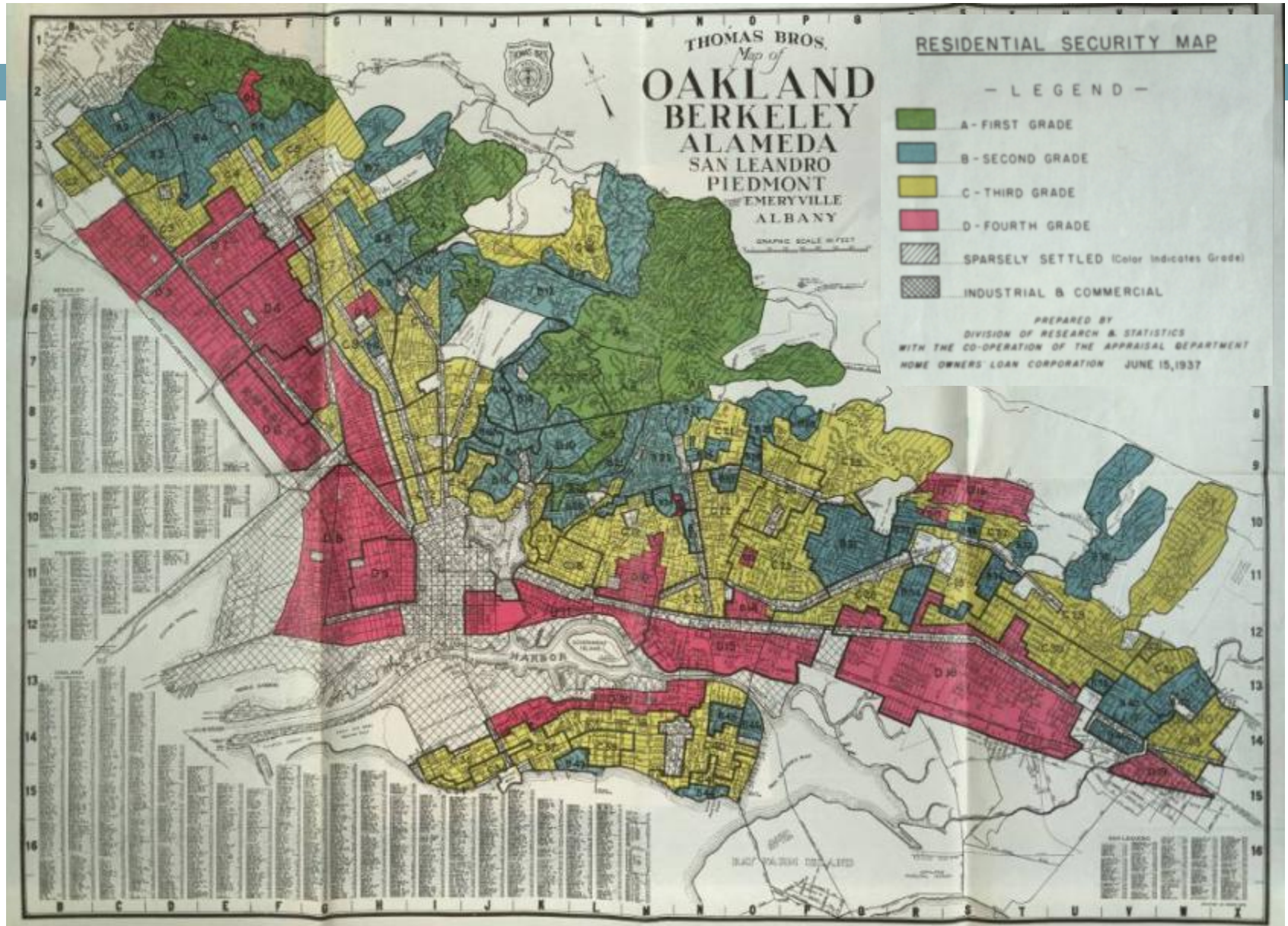
1 in 6 poor Blacks



1 in 7 poor Latinos



Racial Redlining in Alameda County



Unequal Neighborhood Conditions

Compared to people living in **affluent neighborhoods** of Alameda County, residents of **very high poverty neighborhoods** are:



2X more likely to **lack**
access to employment



Over **4X** more likely to be
living in **overcrowded**
households



Facing nearly **8X**
higher rates of
homicide



5X more likely to be **locked up**
as a youth for overwhelmingly
nonviolent offenses



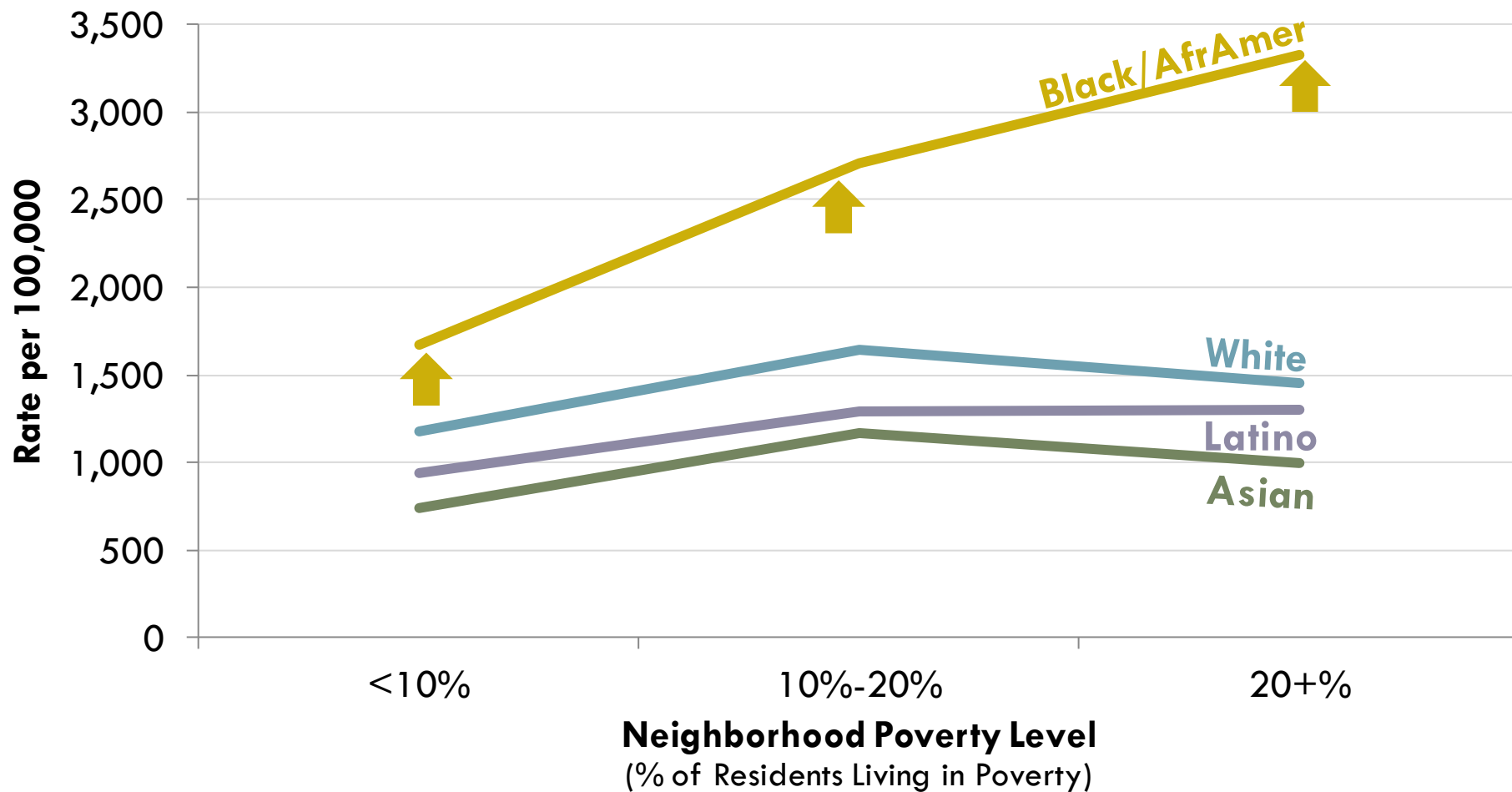
Burdened by a **4X** higher density of
industrial chemical and fuel release
sites that pollute water and soil



CHRONIC STRESS MATTERS

Hypertension Hospitalization Rates by Neighborhood Poverty & Race*

Alameda County, 2009-2011



*Includes hospitalizations with hypertension as a primary or top 4 associated diagnosis
Hospitalization rates and neighborhood poverty are at the zip code level

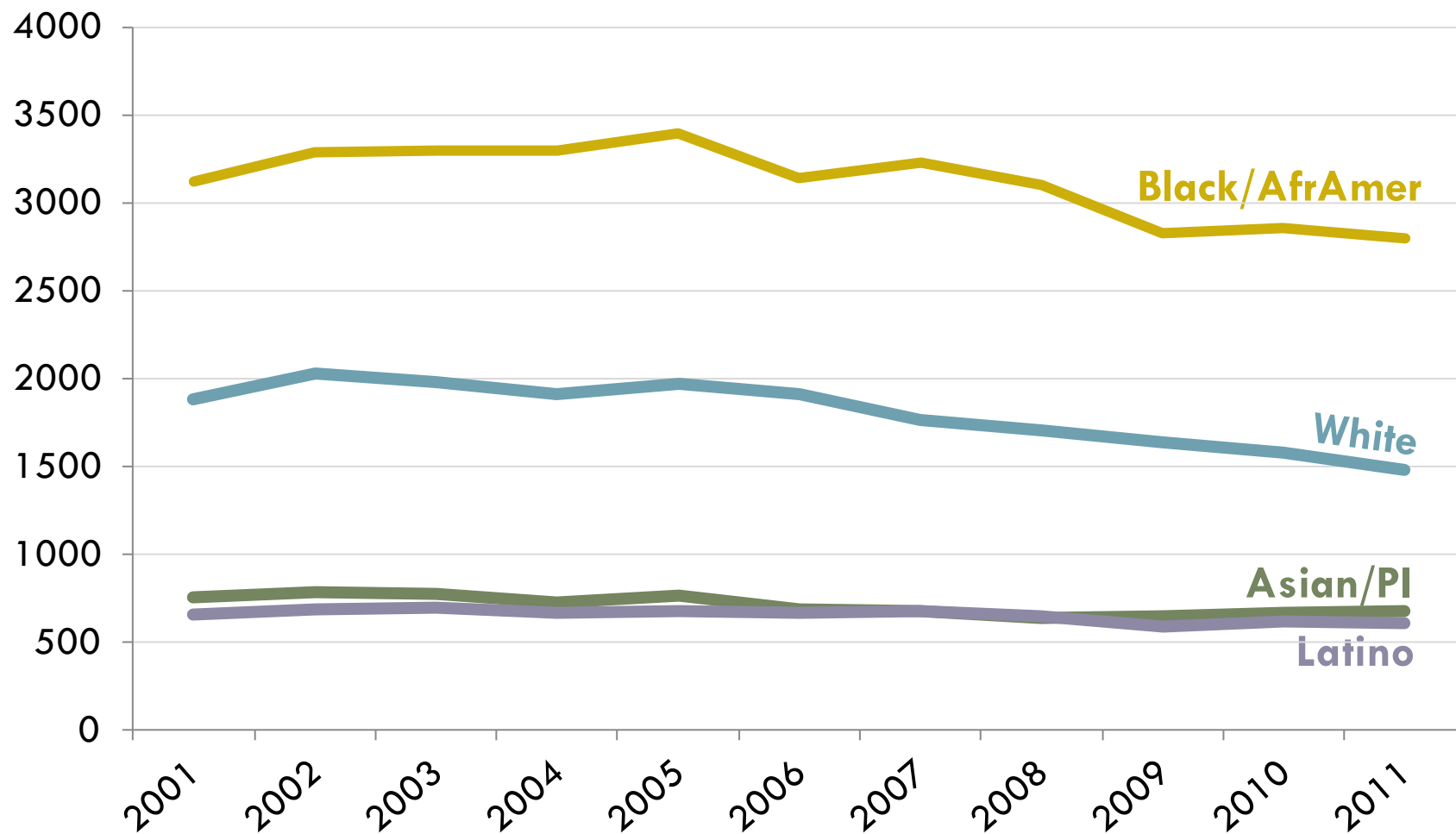
Source: Alameda County OSHPD files, 2009-2011



ACCESS TO HEALTHCARE MATTERS

Total Preventable Hospitalizations by Race

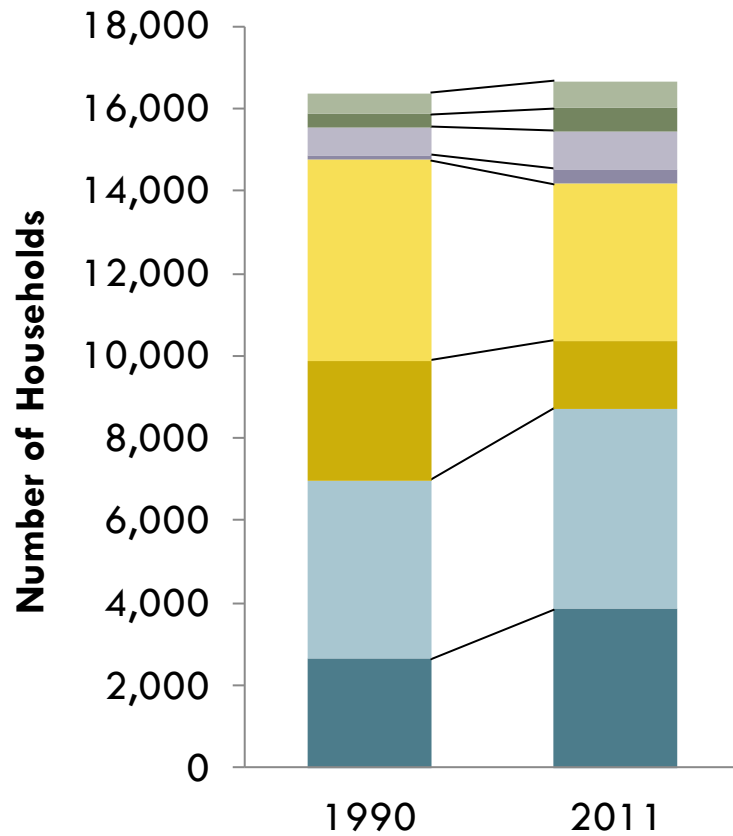
Adults, Alameda County, 2001-2011



GENTRIFICATION & DISPLACEMENT MATTER

Household Population by Race & Housing Tenure

North Oakland

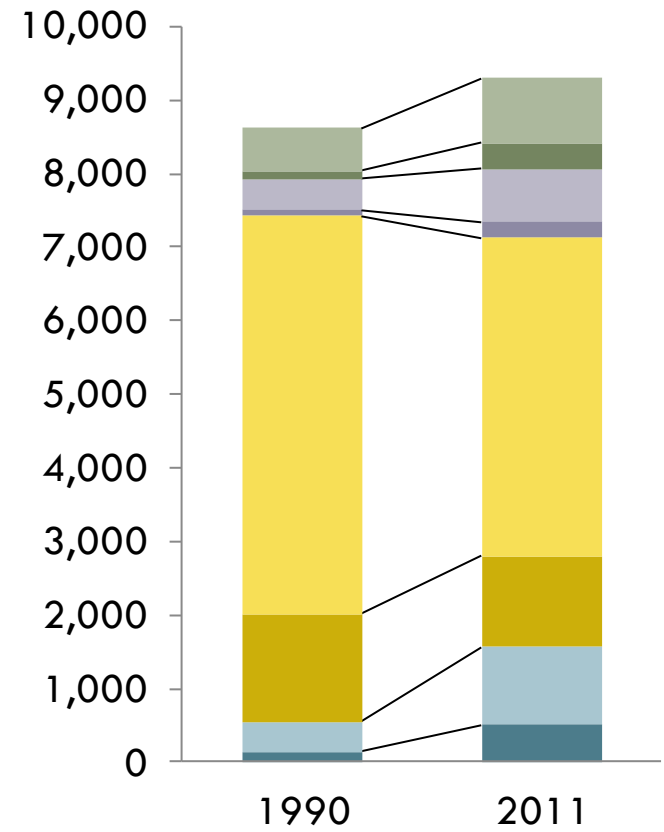


% Afr Amer

47%

31%

West Oakland



% Afr Amer

80%

58%



Compared to a White child born
in the affluent Oakland Hills...

EAST OAKLAND
LIFE EXPECTANCY

70



OAKLAND HILLS
LIFE EXPECTANCY

85

...an African American child born in East Oakland
can expect to live 15 fewer years.

Source: Alameda County Vital Statistics files, 2010-2012

Photo Source: The California Endowment, *Health Happens Here*



WHAT CAN WE DO TO IMPROVE AFRICAN AMERICAN HEALTH & HEALTH INEQUITIES?





Our Vision of Health Equity



EVERYONE in Alameda County –
no matter who you are,
where you live,
how much money you make,
or the color of your skin –
can lead a healthy,
fulfilling and productive life.



The Population Results We Should See

Healthy People

Have the knowledge, habits, & support necessary to be healthy and live well

Healthy Places

Protect and support health, safety and well-being

Healthy Policies and Systems

Support healthy places, healthy people and a just, fair, and inclusive society



Achieving Equity means...

- “Closing the gaps”, while also improving outcomes for all
- To do so, have to:
 - ▣ Target strategies to close the gaps
 - ▣ Focus on changing policies/practices, institutions and structures to improve conditions, in addition to providing services



Socio-Ecological Model

A Framework for Health Equity

Medical Model

UPSTREAM (SOCIAL FACTORS)

Biased Beliefs (Isms)

Narrative about

- Race
- Class
- Gender
- Immigration status
- National origin
- Sexual orientation
- Disability
- Age

Institutional Policy/Practice

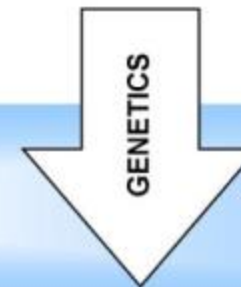
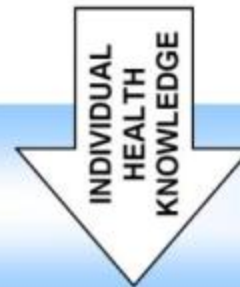
- Corporations & other businesses
- Government agencies
- Non-profit organizations

Systems/ Structures

Social Inequities

- Neighborhood conditions
 - Social
 - Physical
- Residential segregation
- Workplace conditions
- Education
- Housing
- Local economy

Community



DOWNSTREAM (HEALTH STATUS)

Risk Factors & Risk Exposures

- Smoking
- Nutrition
- Physical activity
- Violence
- Chronic cumulative stress

Individual

Disease & Injury

- Infectious disease
- Chronic disease
- Injury
 - Intentional
 - Unintentional

Mortality

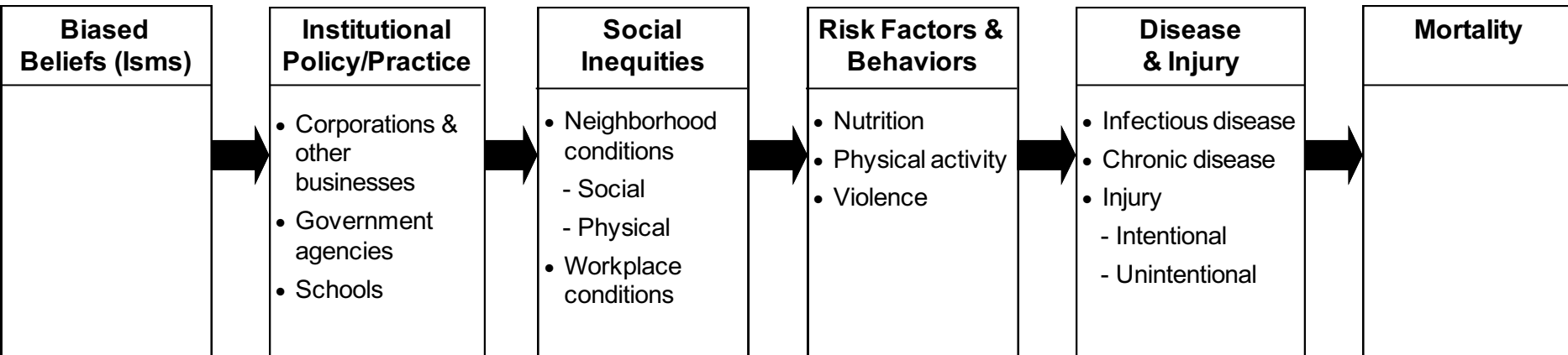
- Infant mortality
- Life expectancy



Asthma Analysis: *From precursors to impacts*

SOCIAL FACTORS

HEALTH STATUS



✓ Individual choice?



- ✓ Proactive Code Enforcement for Habitable Living Conditions (e.g. moisture → mold)
- ✓ City Planning and Building Requirements to decrease risk
- ✓ Restrict exposure sources being sited near sensitive areas



- ✓ Sub-standard housing conditions
- ✓ Limit # of tobacco retailers and advertising
- ✓ Smoke-free buildings and outside areas
- ✓ Improve vehicle, in particular, commercial truck emissions



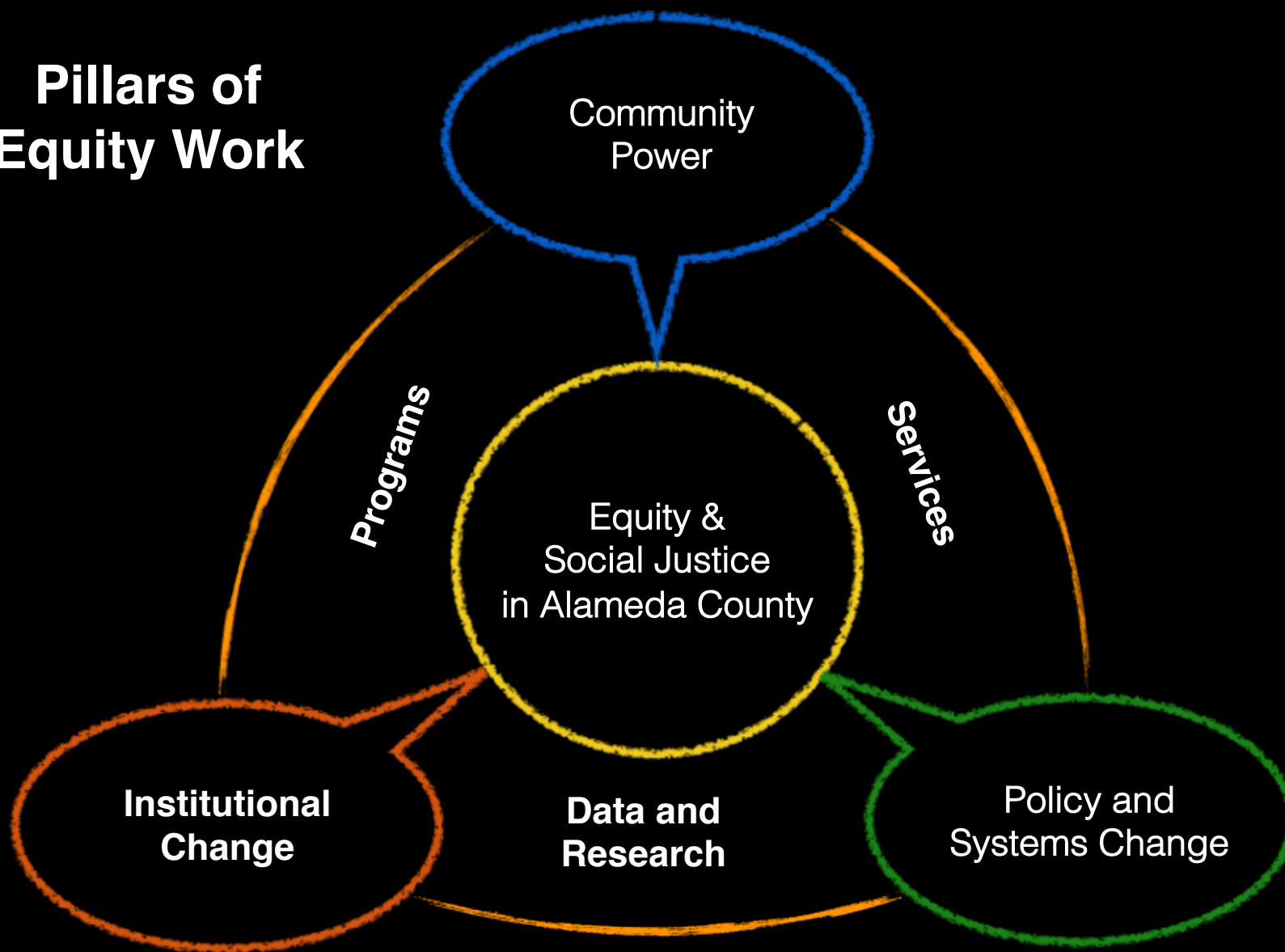
- ✓ Improve smoking rates
- ✓ Improve identification and removal of asthma triggers in homes
- ✓ Improve influenza vaccination rates



- ✓ Asthma Rates
- ✓ Asthma Hospitalization Rate



Pillars of Equity Work



Institutional
Change

Supporting Father Involvement and MCH

Case Example: *Fathers Corps*



Building Power in Impacted Communities

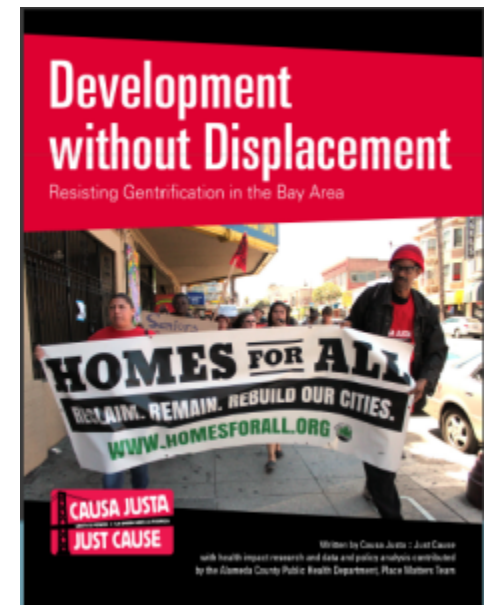
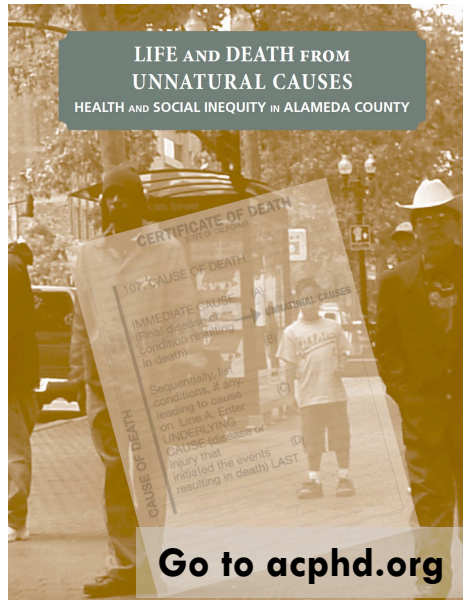
Case Example: City-County Neighborhood Initiative



Community
Power

Empowering Community with Data/Tools

*Case Examples: Health/Social Inequities,
Foreclosures, and Gentrification*



Health For All In Alameda County



Alameda County Public Health Department

Go to YouTube



Policy and
Systems Change

Promoting Healthy Local Policies

Case Example: *Place Matters Initiative*

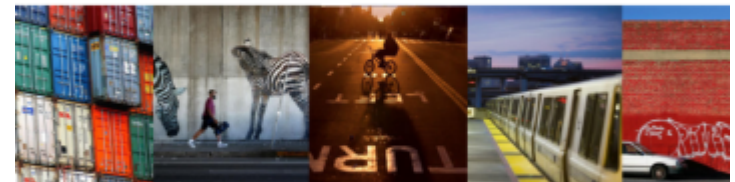


- **Criminal Justice**
 - ✓ Innovations in Re-Entry Mini-Grants
- **Economics**
 - ✓ Healthy Credit Initiative
- **Education**
 - ✓ Implementation of Linked Learning
- **Housing**
 - ✓ Code Enforcement
- **Land Use & Transportation**
 - ✓ Healthy Development Guidelines for Oakland
 - ✓ Health Impact Assessments of Bus Funding



Health and Housing in Oakland:

The need for comprehensive solutions to the housing crisis



Dr. Muntu Davis
Alameda County Health Officer

Special Hearing to Discuss the State of Housing in the City of Oakland
September 30th 2015



Policy and
Systems Change

Transforming Local Systems

Case Examples: Castlemont Community Market &
Oakland Proactive Rental Inspections



Policy and
Systems Change

Diversifying Health Workforce & Building Capacity to Improve Health Equity

Case Example: EMS Corps



Land Use



Economics



Childcare



**Medical
Care**

**Mental
Health**



Jobs



**Healthy
Food**



**We each
have a role
in achieving
health equity**



Clean Air



**Parks and
Activities**



Housing



**Safe
Neighbor-
hoods**



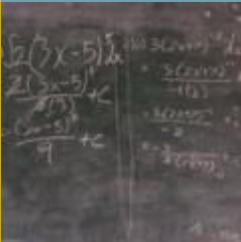
**Transport-
ation**



Education



Residents



**Policy
Makers**



**“Do not go gentle into that good night.
Rage, rage against the dying of the light.”**

Dylan Thomas, *Poet*

**BLACK LIVES MATTER
IN ALAMEDA COUNTY**



QUESTIONS OR COMMENTS?



For More Information

Muntu Davis

Department Director and County Health Officer
Alameda County Public Health Department
muntu.davis@acgov.org
510-267-8000



Tammy Lee

Community Epidemiologist
Community Assessment, Planning, and Evaluation (CAPE) Unit
Alameda County Public Health Department
tammy.lee@acgov.org
510-268-2619