

ALAMEDA COUNTY PUBLIC HEALTH DEPARTMENT'S



**building blocks**  
COLLABORATIVE

# The Roadshow



# We Believe...

All Children Deserve  
the Best Start in Life



# Health Equity

We believe...everyone in Alameda County, no matter where you live, how much money you make, or the color of your skin, has access to the same opportunities to lead a healthy, fulfilling and productive life.

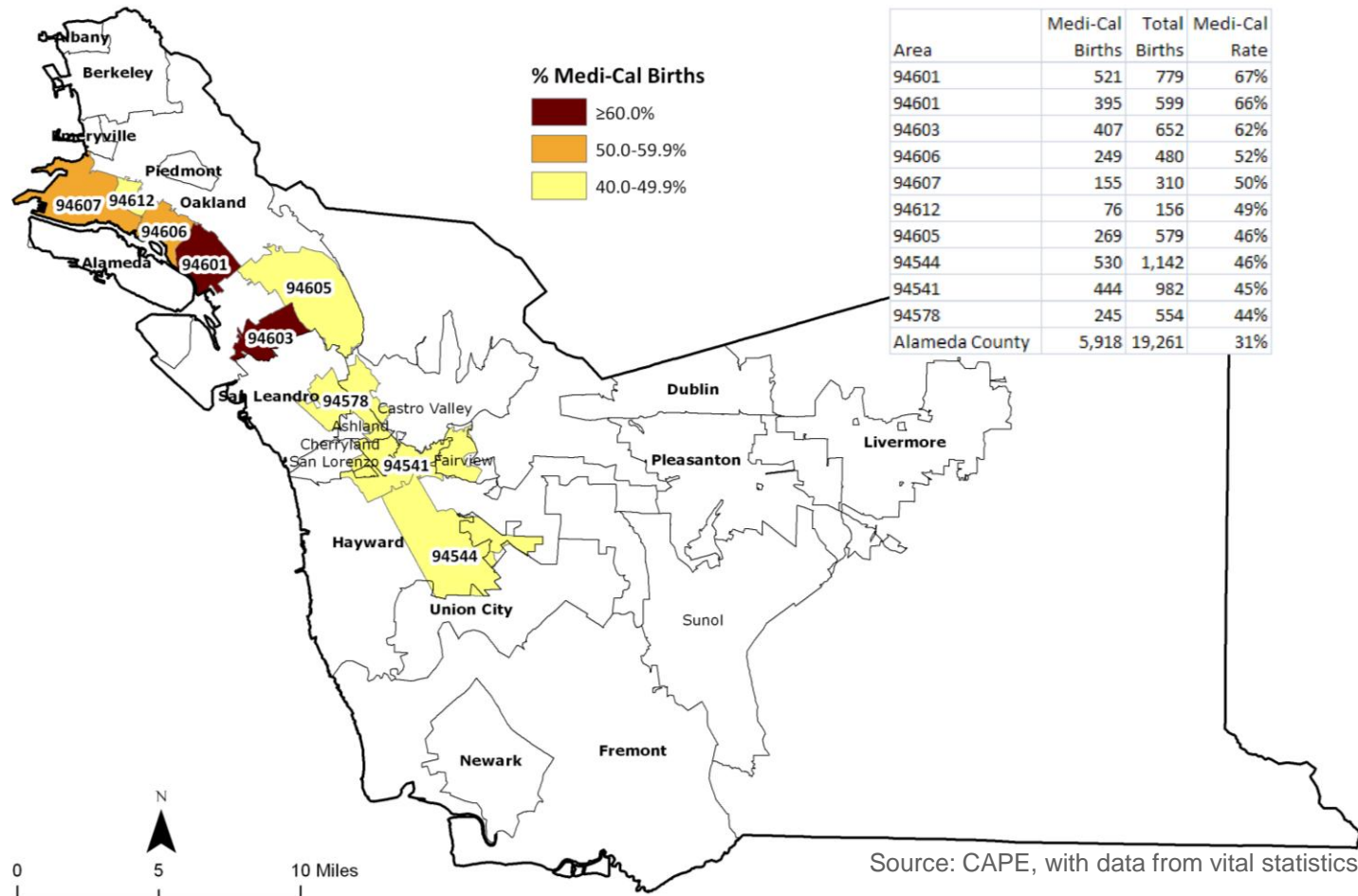


# Our Approach:

Build upon the unique strength of our community and harnesses the collective will to create conditions where every child can thrive.



# 1 in 3 babies born into families that are struggling to make ends meet





# Race, Income, and Place Impact Health: Life Course Perspective



Compared to a White child in the affluent Oakland Hills, an African American born in high-poverty West Oakland is...



**2 times** more likely  
to be born low birth  
weight

**12 times** less likely  
to have a mother  
who graduated from  
college

**13 times** more likely  
to live in poverty

**4 times** less likely to  
read at grade level  
by third grade

**5 times** more likely  
to be unemployed

**3 times** more likely  
to die of stroke

INFANT

CHILD

ADULT

**Cumulative impact:** 14 year difference in life expectancy

Source: Alameda County Death files, 2010-2012; Alameda County Birth files, 2009-2011; American Community Survey, 2007-2011; California Dept of Education, 2012-2013

# From Portrait to Landscape



# Our health problems are not isolated.

Our solutions shouldn't be either.





# The groundwork for good health requires the contributions of many sectors

## Economics

- Neighborhood poverty = lower early school readiness and poorer long-term academic attainment.
- Family savings of as little as \$3,000 = higher odds of high school graduation.
- A 1% increase in wealth = a 5% boost to a young man's chance of escaping a low-wage job.

## Health

- Being born healthy weight = healthy physical, social, and intellectual development.
- Low birth weight = heightened risks for problems in school as early as kindergarten.

## Education

- Pre-K education = more likely to graduate high school.
- Pre-K education can help working families by saving money on daycare.

## Physical Environment

- Community design that encourages walking and biking promotes physical activity and reduces obesity.

## Community

- More social support = better health
- Neighborhood education = higher life expectancy

# BBC Collaborative Projects

Alameda County  
Prosperity  
Project

Food to  
Families

Best Babies  
Zone



# Bill of Rights

All children in Alameda County have a right to be born healthy, and to:

1. be believed in
2. live, play and grow in a clean, safe place
3. receive a quality education
4. be loved by a caring adult
5. eat healthy food
6. explore nature
7. enjoy economic opportunity and financial security
8. access health care that promotes well-being
9. be free from discrimination and violence
10. be included & valued by a supportive community

Developed April 2010



# Building Blocks Collaborative

## Accomplishments since September 2009

- Engaged more than 300 individuals from Alameda County organizations
- Created a space for learning, sharing, and lifting up best-practices across sectors
- Foster and maintain the cross-sector community collaborative that comes together every other month
- Received funding from Robert Wood Johnson, Kellogg, Kaiser, Kresge, and The California Wellness Foundations for our strategic work





# BBC Steering Committee

**Wendy Calimag**

*Girls Inc.*

**Mariela Cedeño**

*Mandela Marketplace*

**Lisa Erickson**

*First Five*

**Michelle Grant-Groves**

*Early Education Specialist*

**Dominica Henderson**

*Oakland Housing Authority*

**Sikander Iqbal**

*Youth UpRising*

**Kiko Malin**

*ACPHD*

**Keisha Nzewi**

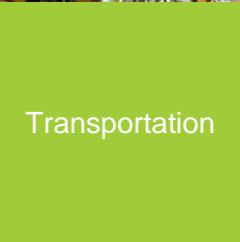
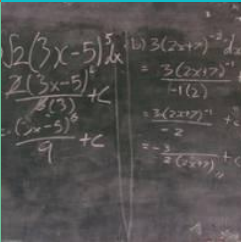
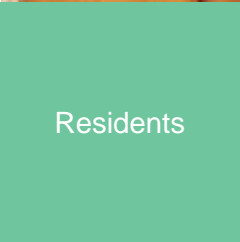
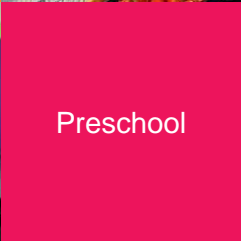
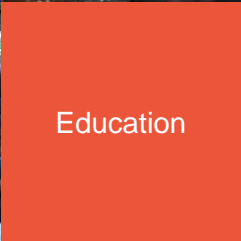
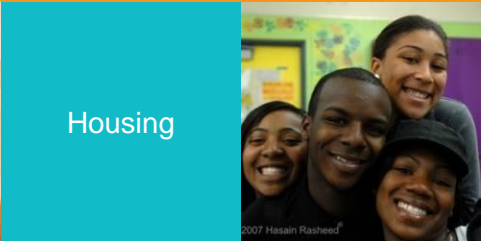
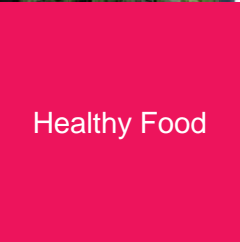
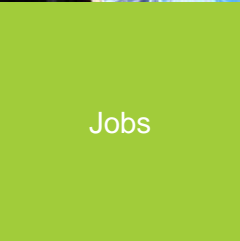
*Alameda County Community Food Bank*

**Jason Wallace**

*YMCA*







Healthy Food

Planning

Childcare

Medical Care

Jobs

Clean Air

Parks and Activities

We're in this together

Policy Makers

Education

Housing

Preschool


Safe Neighborhoods

Residents

Transportation



# Share your Sparks!

- After the last BBC meeting, did you have a new idea that was sparked into a specific action?
  - After the last BBC meeting, did you form a new partnership?
  - What else sparked for you after the last BBC meeting?
- 

# Thank You

Jessica Luginbuhl  
Special Projects Manager  
Jessica.luginbuhl@acgov.org  
510-208-1135

Laiah Idelson  
Communications & Collaborations Specialist  
Laiah.idelson@acgov.org  
510-268-7078

ALAMEDA COUNTY PUBLIC HEALTH DEPARTMENT'S

