

Figure 1: What leads to a lower life expectancy...

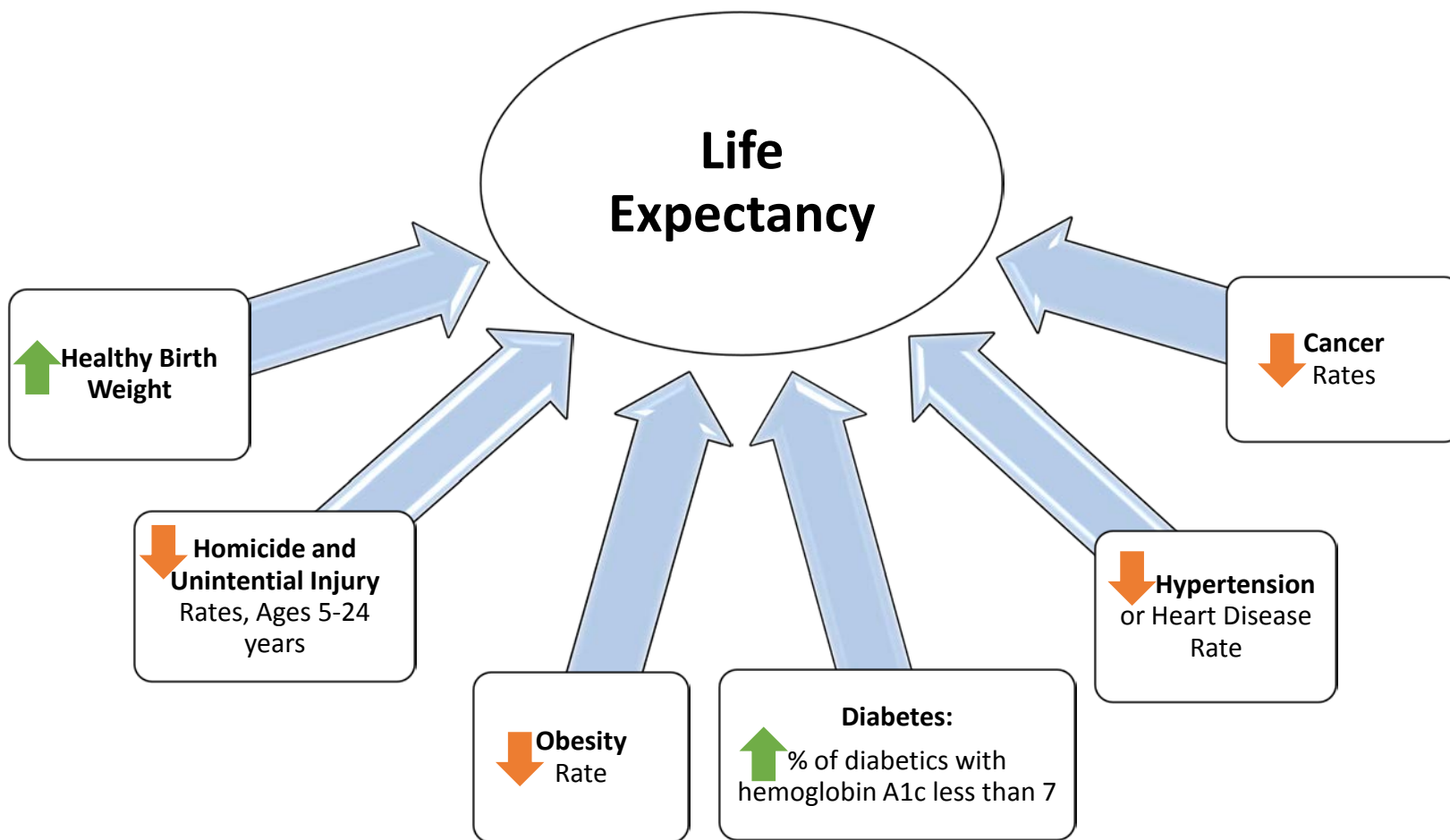


Figure 2: What you need to live well...

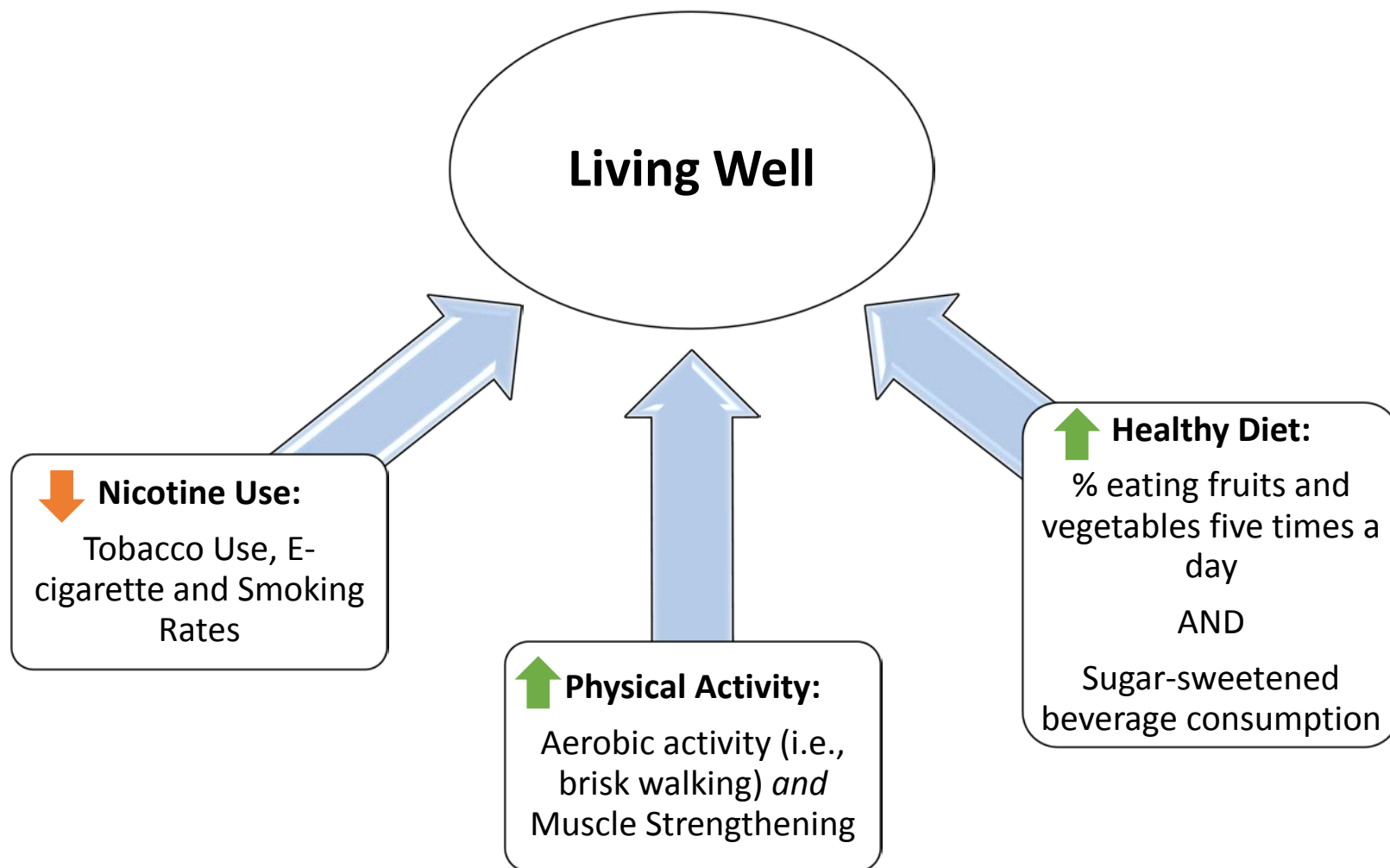


Figure 3: What impacts the health of communities...

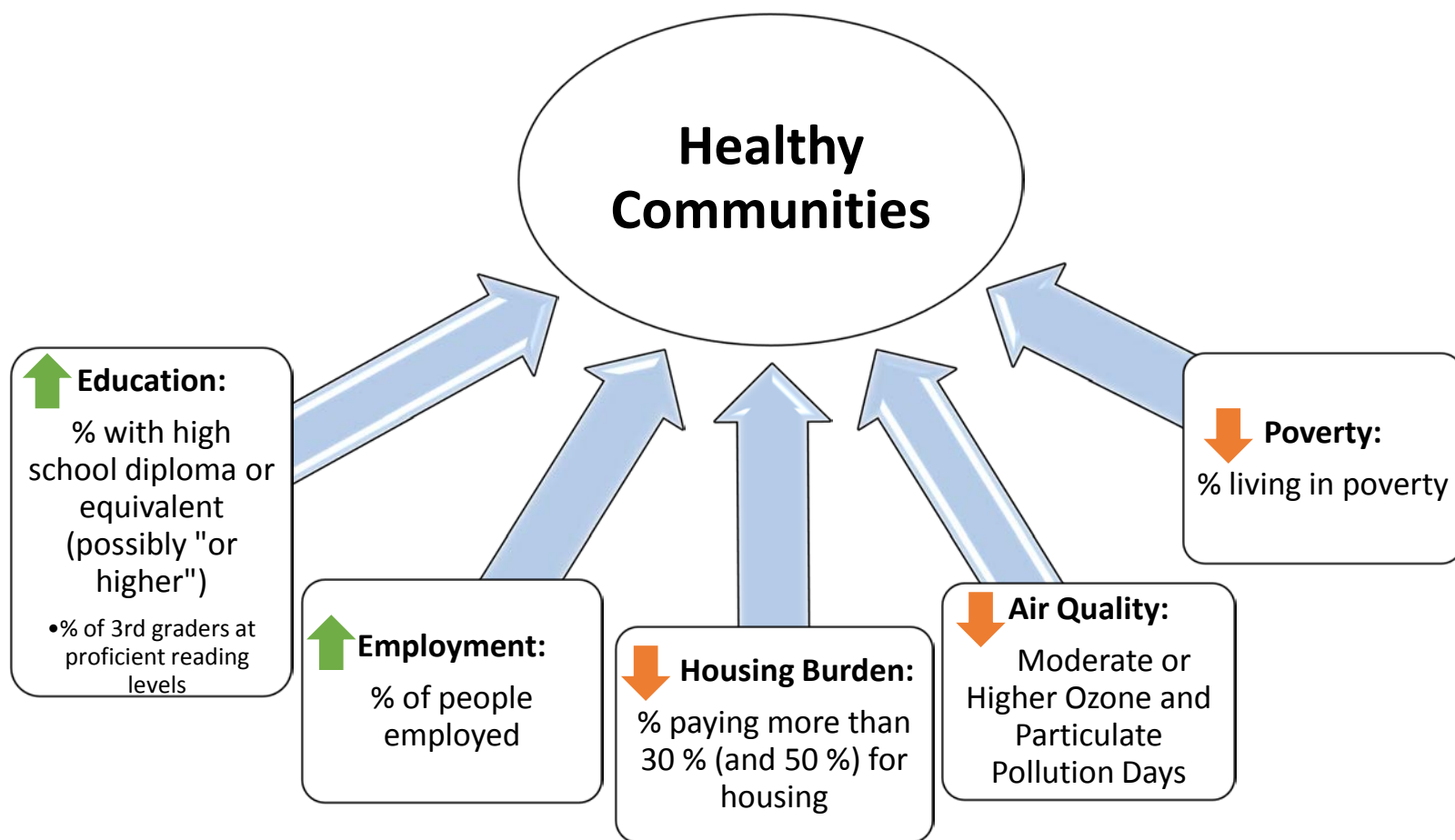


Figure 4: When we have efficient, safe, and patient-centered health care systems...

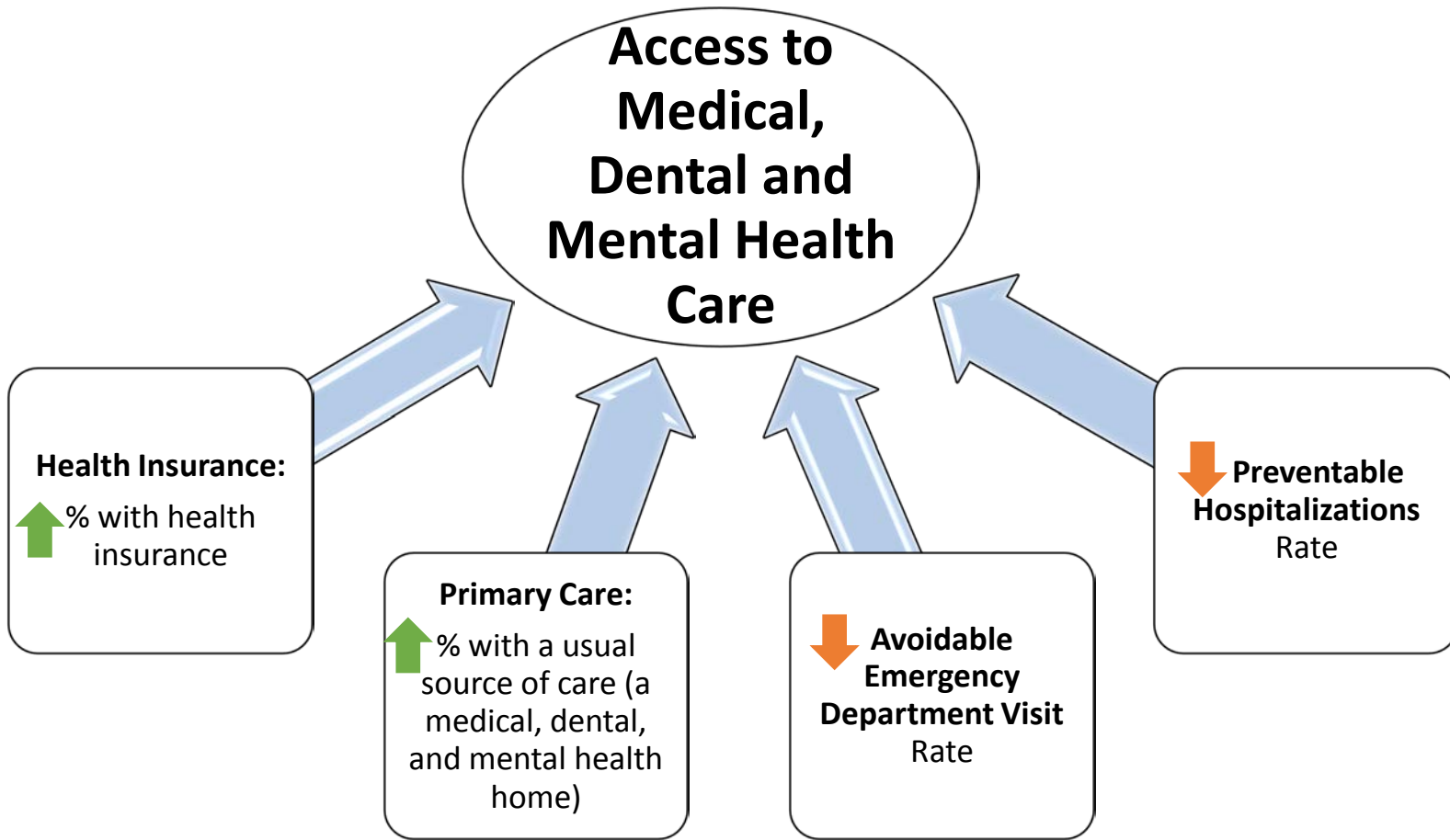
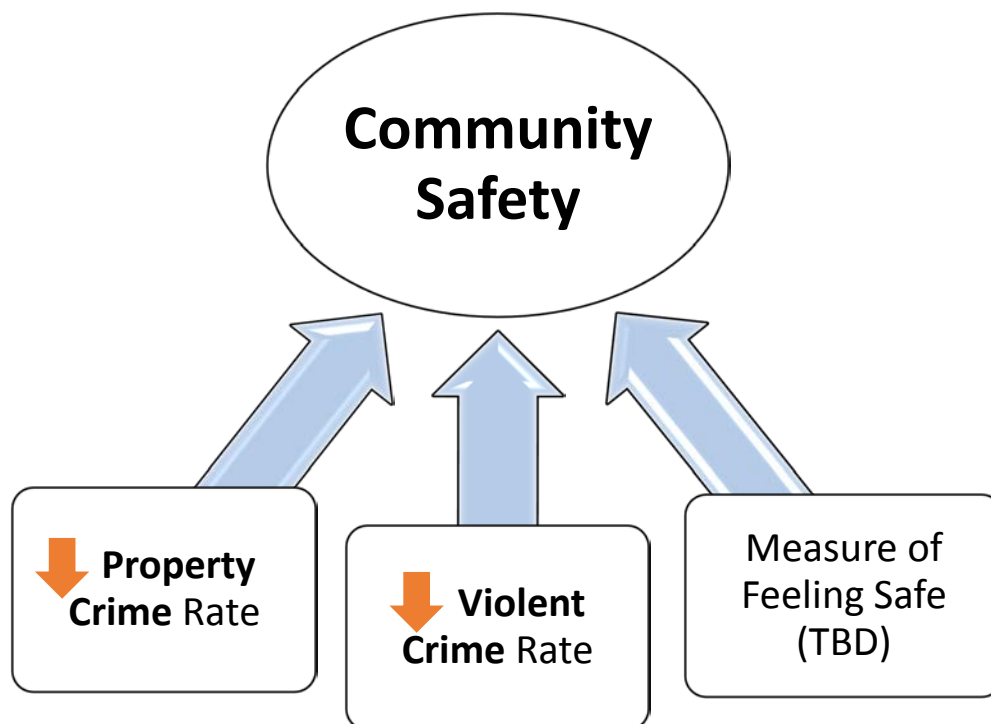


Figure 5: When we have safe communities...



Crime can have a significant impact on the well-being of the population and contributes to premature death and disability, poor mental health, and lost productivity. Exposure to crime and violence has been shown to increase stress, which may:

- Worsen hypertension and other stress-related disorders
- Contribute to the increased prevalence of certain illnesses, such as upper respiratory illness and asthma, in neighborhoods with high levels of violence
- Lead people to engage in unhealthy behaviors such as smoking in an effort to reduce or cope with stress.

Neighborhoods with high violence are thought to encourage isolation and therefore inhibit the social support needed to cope with stressful events. Evaluations, such as the County Health Rankings, measure crime statistics as indicators for success.



Economic Stability

Poverty, Employment, Housing, Food



Education

High School Graduation,
3rd Grade Reading



Health and Health Care

Health Conditions and
Access to Care



Neighborhood and Built Environment`

Crime, Violence, Environmental Conditions (e.g., Air Quality)



Social and Community Context

Civic Participation (e.g., Voting)