

OCTOBER 2014

PATHWAYS TO
THE MIDDLE

ECONOMIC
GROWTH

ECONOMIC
SECURITY

Economic Prosperity Strategy

Improving economic opportunity
for the Bay Area's low- and
moderate-wage workers

*An Economic
Prosperity
Strategy for the
region*

Project background

POTENTIAL ECONOMIC PROSPERITY STRATEGIES

1) Questions?

WORKFORCE DEV. TRAINING & EDUC.

1) Establish partnerships between
2) Career ladder programs that
3) Workforce development
4) Training providers
5) Career ladder programs that
6) Workforce development
7) Training providers

JOB SEARCH & HIRING PROCESS

1) Create a sector-specific platform
for recruiters & jobseekers in
multi-wage areas (leads to 1st)
2) Region-wide online platform
for placement jobs
3) System for career advancement w/
social networks
4) Career progression to
5) More specialized &
6) Career progression to
7) More specialized &

IMPROVING JOB QUALITY

1) Multi-agency
to a set of
job support
2) Career
to improve
3) Hiring process

TRANSPORTATION

1) Improve
2) Improve
3) Improve

LAND USE & DEVELOPMENT

1) Improve
2) Improve
3) Improve

JOBS CREATION

1) Improve
2) Improve
3) Improve

SOCIAL SUPPORT SERVICES

1) Improve
2) Improve
3) Improve

MAXIMUM OCCUPANCY
NOT TO EXCEED 200 PERSONS
OR
NOT TO EXCEED 10% PERCENT
OF OPERABLE PARTITION
IS IN USE



This work is a collaboration between regional agencies, Federal government, and consortium of organizations.

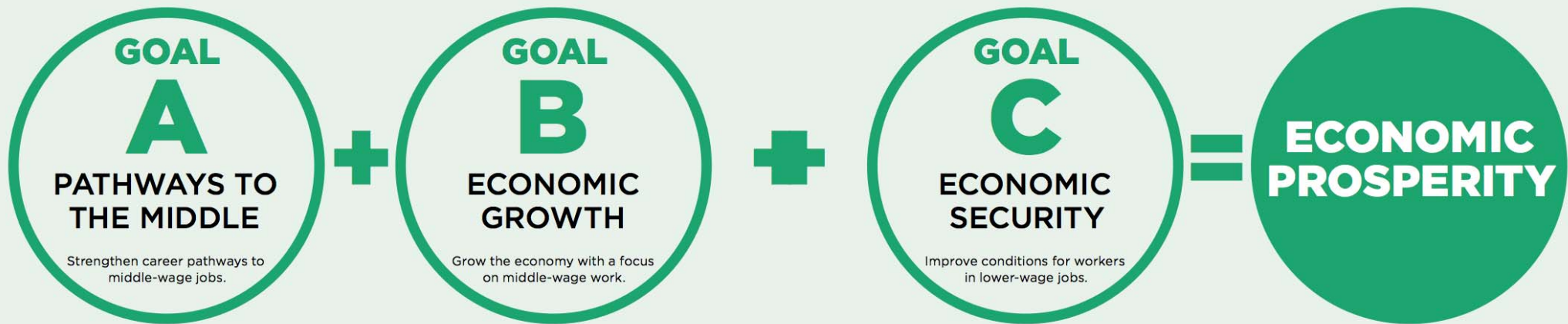


WORKING PARTNERSHIPS USA



CCSCE
Center For Continuing Study of the California Economy

Economic prosperity means achieving three goals: upward mobility, more growth in the middle, and better conditions at the bottom.



Key findings



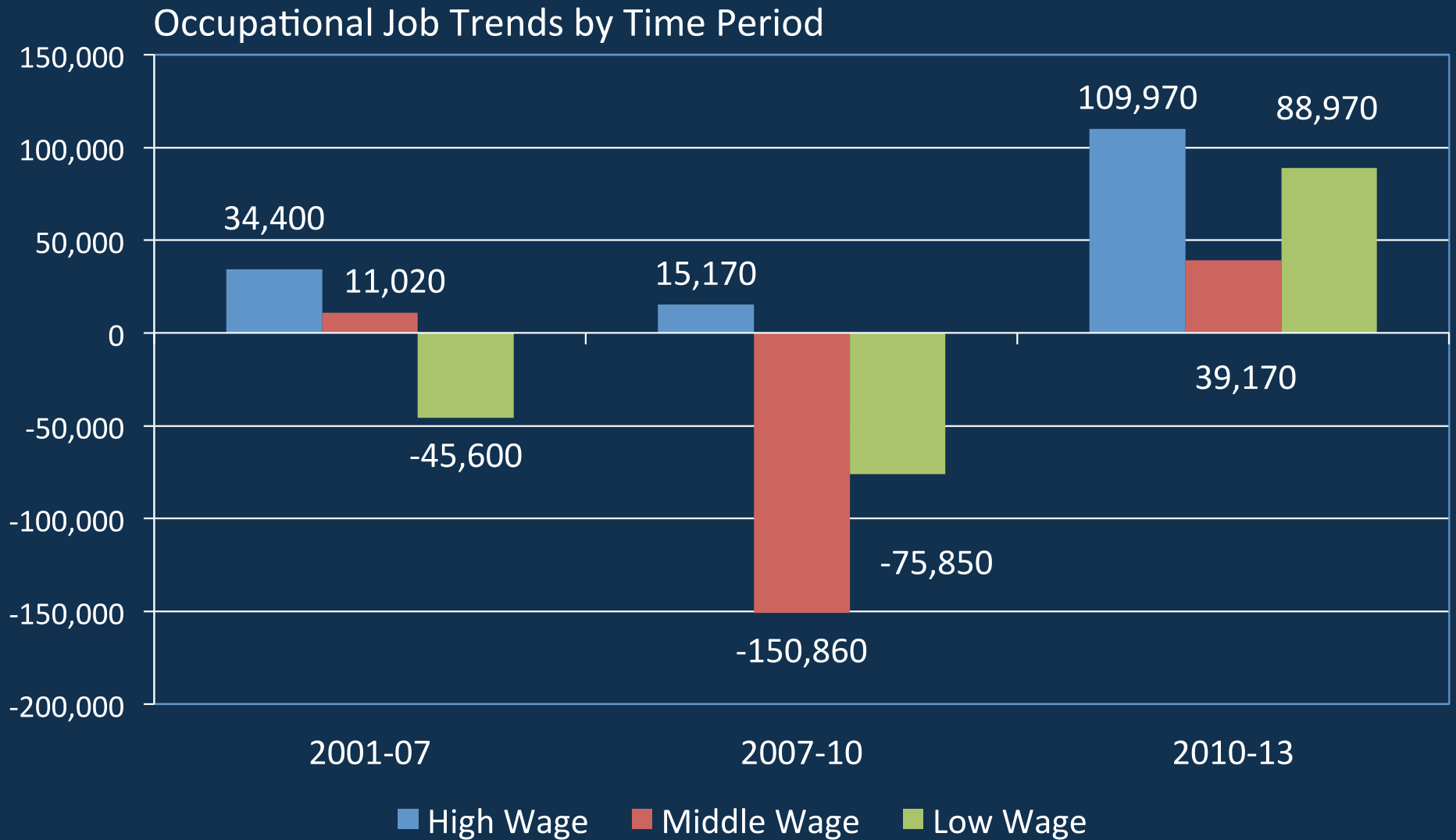
Today, just over one third of all Bay Area workers are low and moderate wage--earning less than \$18 per hour.

	2010	Share of total workforce
\$30 and above	1,196,090	38%
\$18 to \$30 an hour	850,210	27%
Under \$18 an hour	1,126,860	36%
Total	3,173,160	

Source: 5-year 2011 American Community Survey (PUMS data)

Project focus is **economic mobility**: how to move low and moderate wage workers into middle income jobs (earning at least \$18 to \$30 per hour)

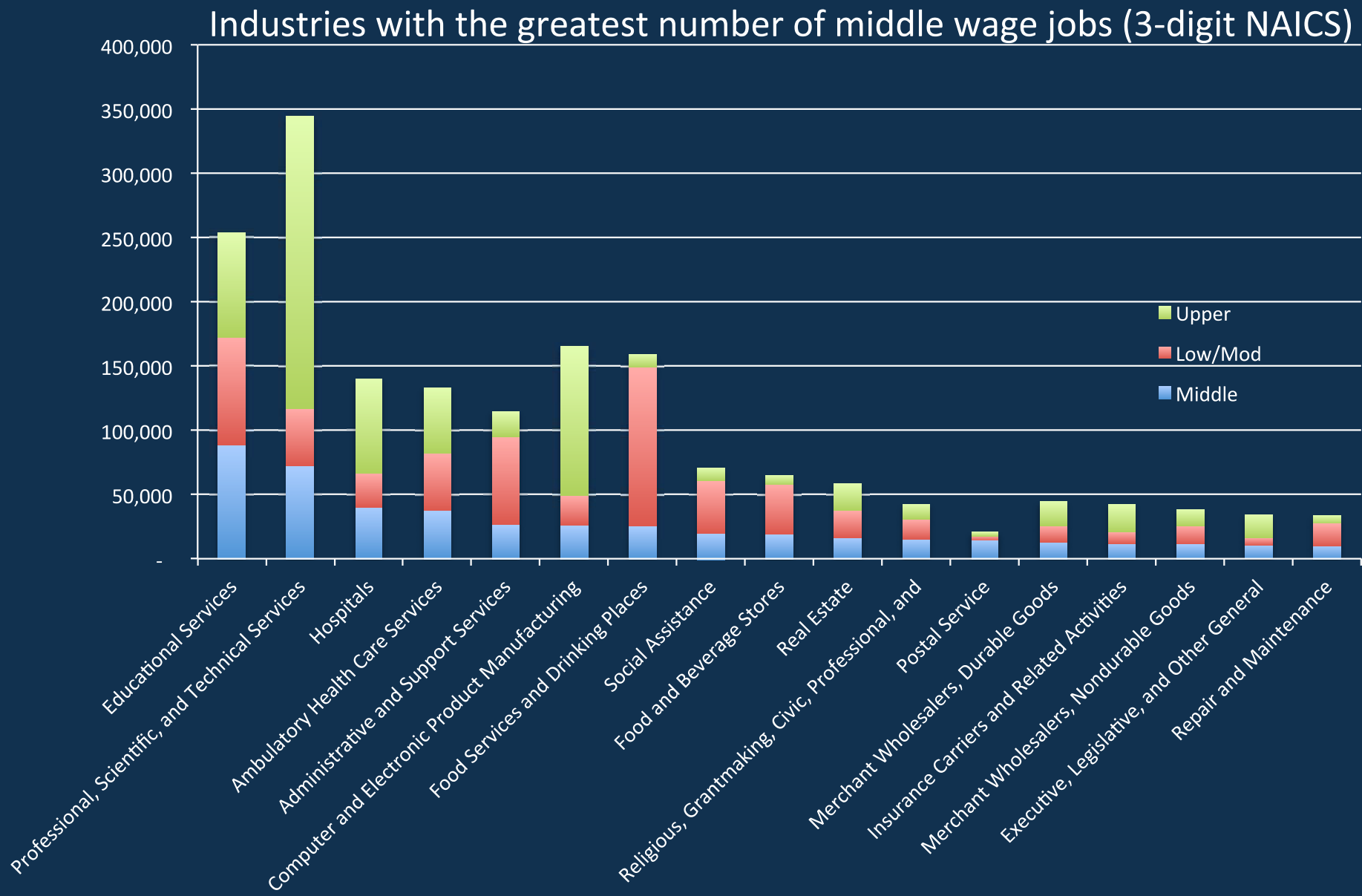
The current recovery shows a barbell economy – growth at the top and bottom...



Half of middle wage jobs do not require a college degree – and are found in many industries.

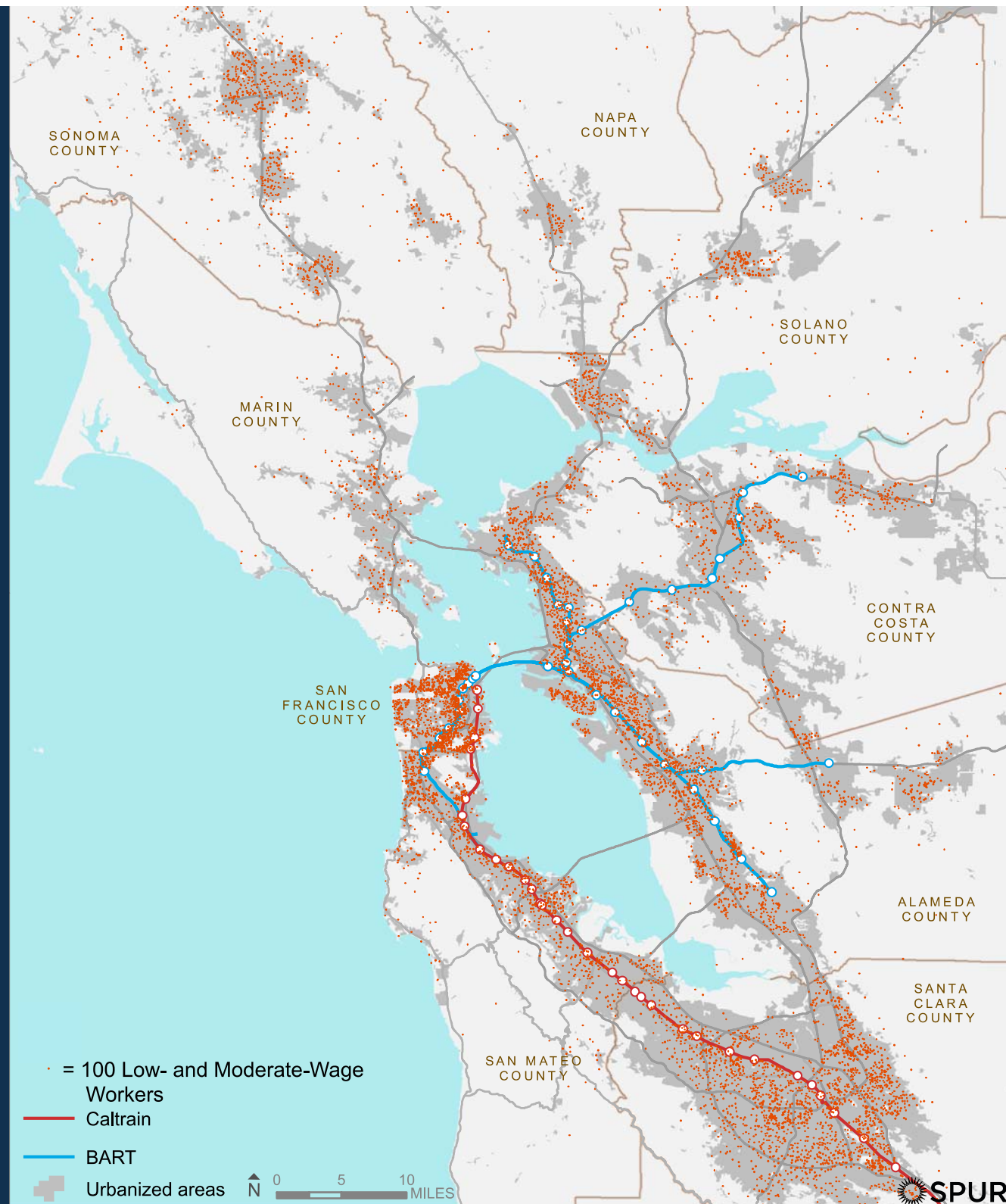
Occupational group	Job openings (2010-2020)	Specific occupations	Job openings by occupation	Median wage
Office	47,470	1st-Line Supervisors of Office and Admin. Workers	14,100	\$28.77
		Executive Secretaries & Admin. Assistants	10,490	\$26.06
		Bookkeeping, Accounting, and Auditing Clerks	10,160	\$21.31
		Secretaries and Administrative Assistants	7,650	\$19.73
		Graphic Designers	5,070	\$23.84
Sales	36,440	Customer Service Representatives	17,470	\$18.91
		Sales Reps, Wholesale and Manufacturing	11,340	\$30.37
		Sales Representatives, Services	7,630	\$30.89
Construction	26,030	Carpenters	9,210	\$31.01
		Construction Laborers	6,360	\$23.98
		Heavy and Tractor-Trailer Truck Drivers	6,130	\$19.69
		Painters, Construction and Maintenance	4,330	\$23.03
Distribution and repair	18,460	Maintenance and Repair Workers, General	7,120	\$20.53
		Automotive Technicians and Mechanics	5,950	\$23.56
		Light Truck or Delivery Services Drivers	5,390	\$16.16
Health care	13,830	Medical Secretaries	5,050	\$19.61
		Medical Assistants	4,510	\$17.55
		Licensed Practical and Vocational Nurses	4,270	\$27.94
ICT	10,890	Computer Support Specialists	10,890	\$30.37
Retail	10,460	First-Line Supervisors of Retail Sales Workers	10,460	\$21.18

There are no “middle wage” industries. (although the distribution of wages varies).



Lower wage workers live and work everywhere.

So increasing economic opportunity is a region-wide priority.



Lower wage jobs are located everywhere (and where higher-wage jobs are).

