



What is Human Trafficking?

Modern-Day Slavery

Human trafficking is “the recruitment, harboring, transportation, provision, or obtaining of a person for labor or services, through the use of force, fraud, or coercion for the purpose of subjection to involuntary servitude, peonage, debt bondage, or sex slavery.”

Children who are exploited are often referred to as Commercially Sexually Exploited Child (CSEC)

<http://www.state.gov/g/tip/laws/index.htm>



Sex Trafficking in the United States

100,000 people are estimated to be forced into sexual exploitation in the United States.

International Labor Organization (2014)

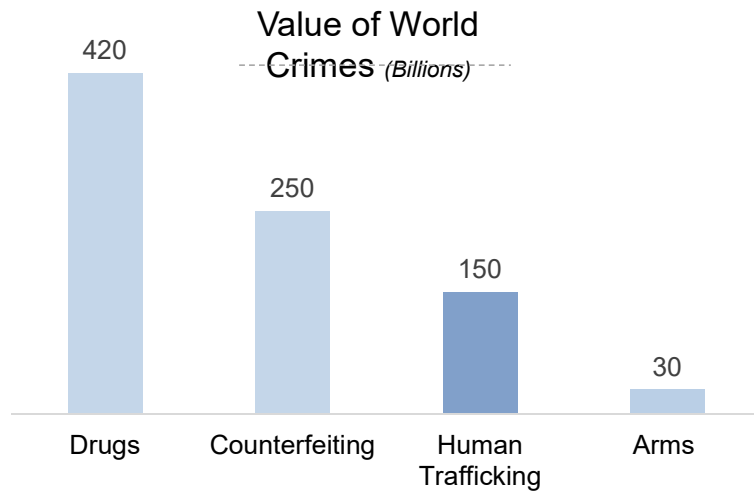
That's the size of a football stadium.



Copyright 2016 Protect All rights reserved



Supply and Demand



Human Trafficking is the **Third Largest** and **Fastest Growing** Criminal Enterprise

Copyright 2016 Protect All rights reserved

Human Trafficking Statistics

- The Average age of a person who is sex Trafficked in the US is 12-14.
- Sex trafficking victims are overwhelmingly female (94 percent)
- 65-95% of Trafficked Victims were Sexually Abused as a Child
- 88% of Traffickers were Abused as Children - DePaul School of Law.
- 84% of victims in confirmed sex trafficking cases are identified as U.S. citizens



U.S. Department of Justice

<http://www.justice.gov/criminal/ceos/prostitution.html>

CALIFORNIA REALITY



'Girl' used to find pedophiles online

Online: 20k inquiries in 10 weeks



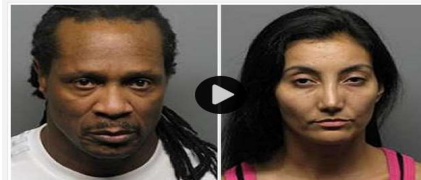
Hayward - Guerilla Tactics

'OPERATION CROSS COUNTRY' CRACKS DOWN ON HUMAN TRAFFICKING



San Rafael – 11 women; one seven months pregnant

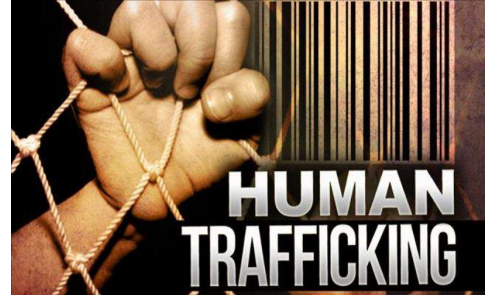
COUPLE ACCUSED OF RUNNING HIGH-PRICED PROSTITUTION RING IN DANVILLE



Officials arrest three suspects accused of operating a high-dollar prostitution ring in San Ramon and Danville for the last 14 years.

Danville - Six 18-25 year olds

- People with disabilities are particularly vulnerable to human trafficking: Perpetrators like to prey on those who may be less inclined to report abuse. [Deaf and hard-of-hearing populations](#) experience abuse about **one and a half times more frequently** than those without hearing difficulties. Women with disabilities suffer significantly higher rates of [domestic violence and sexual assault](#) compared to women without disabilities. They also report abuse that is “more intense” and lasts longer.
<https://www.psychologytoday.com/blog/modern-day-slavery/201709/the-underrecognized-victims-trafficking-deaf-women>
- Some human traffickers recruit handicapped young girls, such as those suffering from Down Syndrome, into the sex industry.-Skinner, E. Benjamin. *A Crime So Monstrous: Face-to-Face with Modern-Day Slavery*. New York, NY: Free Press, 2008.



Human Trafficking – California Consequences

Sex Trafficking

Prison sentence of **9-12 years** (15 years to Life if child is under 18)

Register as a sex offender

Everything they own is sold and given to programs that rehabilitate survivors

Fines up to \$1.5 million

Labor Trafficking

Prison sentence of **5, 8, or 12 years**

Fines up to \$1.5 million



California Penal Code 236.1
PC



Trafficking / Exploitation – Federal Consequences

Commercial Sexual Exploitation of Children (CSEC)

15 years to Life, fine
if child is under 14, or under 18 with force, fraud and coercion

10 years to Life, fine
if child is between 14-17 and no force, fraud or coercion

Production of Child Pornography

15 - 30 years
if first offense

15 years to Life
with prior convictions

Coercion, Enticement or Transportation

10 years to Life, fine

Forced Labor

Up to 20 years, fine



Title 18 U.S. Code, § 1591, 1589, 2422, 2423(a), 2251

Copyright 2016 Protect All rights reserved

Labor Trafficking Red Flags

- Has been abused at work or threatened with harm by an employer or supervisor
- Is not allowed to take adequate breaks, food, or water while at work
- Is not provided with adequate personal protective equipment for hazardous work
- Was recruited for different work than he/she is currently doing
- Is required to live in housing provided by employer
- Has a debt to employer or recruiter that he/she cannot pay off

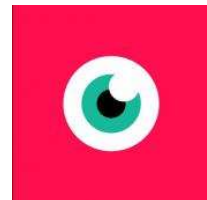
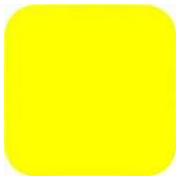
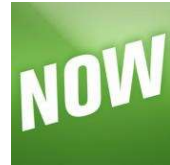
This publication was made possible in part through Grant Number 90ZV0102 from the Anti-Trafficking in Persons Division, Office of Refugee Resettlement, U.S. Department of Health and Human Services (HHS). Its contents are solely the responsibility of the authors and do not necessarily represent the official views of the Anti-Trafficking in Persons Division, Office of Refugee Resettlement, or HHS.

Sex Trafficking Red Flags

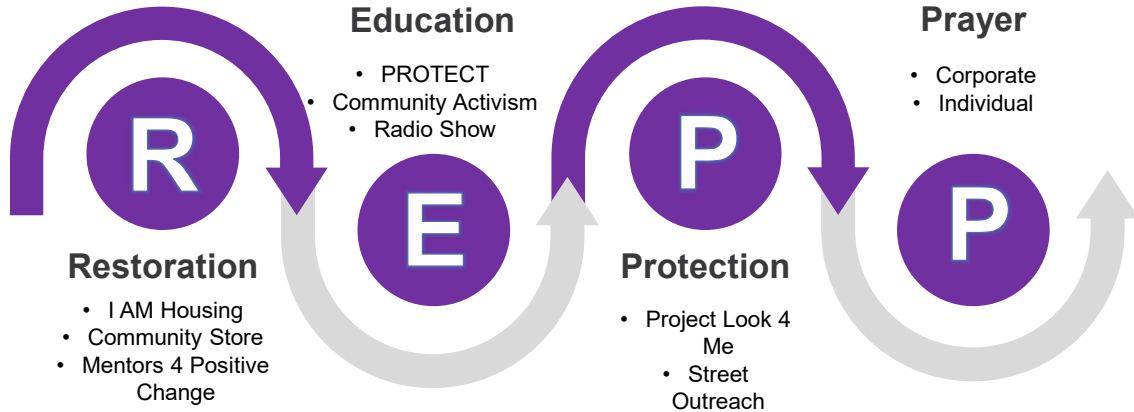
- Is under the age of 18 and is involved in the commercial sex industry
- Teenage pregnancy
- Has tattoos or other forms of branding, such as tattoos that say, "Daddy," "Property of...", bar code on back of neck, etc.
- Reports an unusually high numbers of sexual partners.
- Infections from cigarette burns or bite marks
- Does not have appropriate clothing for the weather or venue.
- Uses language common in the commercial sex industry...blade, track, Daddy, Trick, etc.
- Shows signs of physical or sexual abuse, medical neglect, untreated STIs, chronic pelvic or excretory problems. Vaginal and rectal trauma, signs of torture, Jaw pain, dental problems, missing teeth, Black eyes, and Bald spots.
- PTSD, suicidal ideation, and intense shame

This publication was made possible in part through Grant Number 90ZV0102 from the Anti-Trafficking in Persons Division, Office of Refugee Resettlement, U.S. Department of Health and Human Services (HHS). Its contents are solely the responsibility of the authors and do not necessarily represent the official views of the Anti-Trafficking in Persons Division, Office of Refugee Resettlement, or HHS.

Social Media Landscape



Love Never Fails Introduction



LOVE NEVER FAILS

Restoration

Women, Men and Children

Victim

Stabilize

Empowered People,
Parents, & Leaders in
IT, Real Estate,
Residential Treatment,
Banking, Retail, Food
Service, & Nursing
Industry

Advocacy

Sustain

Leadership

E ducation



PROTECT will be piloting its program in the 35 rural counties over the next three years. We are in discussions with the remaining 23 urban counties, and welcome your support as we fight to ensure that every child in California is protected.



- | | |
|-----------|-----------------|
| Alpine | Modoc |
| Amador | Mono |
| Butte | Napa |
| Calaveras | Nevada |
| Colusa | Placer |
| Del Norte | Plumas |
| El Dorado | San Benito |
| Glenn | San Luis Obispo |
| Humboldt | Shasta |
| Imperial | Sierra |
| Inyo | Siskiyou |
| Lake | Sutter |
| Lassen | Tehama |
| Madera | Trinity |
| Mariposa | Tulare |
| Mendocino | Tuolumne |
| Merced | Yolo |

LOVE NEVER FAILS



AB 1227 approved by Governor Brown on 10/9/17

P rotection

FBI: 168 kids rescued, 281 pimps nabbed in sex-trafficking crackdown



Federal Bureau of Investigation Director James Comey testifies during a hearing of the Senate Judiciary Committee in the Dirksen Senate Office Building on Capitol Hill on May 21, 2014, in Washington, DC. MANDEL NGAN/AFP/GETTY IMAGES
Comment / **21.6K** Shares / Tweet / Stumble / @ Email

WASHINGTON -- Nearly 170 victims of child sex trafficking, many of whom had never been reported missing, were rescued in the last week as part of an annual nationwide crackdown, the FBI said Monday.

“Many of the children recovered during this operation were never reported missing,” John Ryan, president of the National Center for Missing and Exploited Children, said at the press conference. “When they go missing from child welfare systems, they are literally flying under the radar. No one is reporting them missing, hence no one is looking for them”

“About 10 percent of the children were lost in the child welfare system,” officials said.

<http://www.washingtontimes.com/news/2014/jun/23/fbi-sting-hits-pimps-frees-kids/?page=all>

P prayer



JOIN US THE 1ST SUNDAY OF EACH MONTH

Join us in gathering for prayer in cities across the Bay Area and beyond, as we call out to God to end human trafficking in our communities. Please contact names listed below to join a group in a designated city, or to inform us that you will be praying with a group in your own city. Together, let's touch ground on the land where we live and declare God's mercy, hope and deliverance for the victims of this injustice.

FOR CITIES AND MEETING TIMES PLEASE EMAIL

belovedalvarez@gmail.com

A LOVE NEVER FAILS
COMMUNITY PRAYER INITIATIVE

LOVENEVERFAILS
LOVENEVERFAILSANIMATE

<http://www.loveneverfailsus.com/prayer-form>

1

2 Houses - 87 women and 15 children

2

PROTECT in 17 Counties

3

80+ Mentors Trained

4

16 Survivors/@Risk Employed at LNF Community Store

5

300+ Exploited Reached Annually via Street Outreach

6

80+ Search and Rescue Operations

7

30k+ Community Members Aware

8

Santa Rita Re-Entry Outreach

9

Weekly Corporate Prayer

10

Collaboration with 100s of Partners

- 1. 76% need job training & education
- 2. 75% need safe housing
- 3. 61% need health care



The San Francisco Bay Area has the fastest growing income gap in the nation (Brookings Institute). In Hayward, for example, 15% of residents live under the federal poverty level of \$24,600 for a family of four with 16-24 year olds experiencing the greatest concentration of poverty.



Workforce Development

TRAFFICKING SURVIVOR #1 NEED

- Markets are transitioning causing disruption to service industries where low income workers are often employed at minimum wage.
- In today's market ridesharing with UBER or Lyft is supplementing several household incomes. As of November 2017 Ridesharing generated 20% of the miles driven in the Bay Areaand the average pay per hour for a driver is \$19.
- But what happens when those who rely on this industry are disrupted by self driving vehicles.
- In Nov 2017 Samsung was the 39th company to get the green light in the last year for autonomous driving.
- This technology promises to be so pervasive in the next 20 years that some believe that people will no longer know how to drive.
- Get latest company to get authorized for autonomous driving



Create the Wave...Fill the Ocean

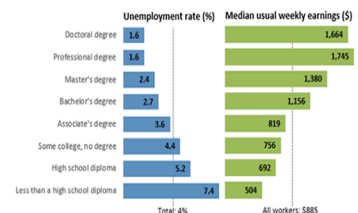
BASIC NEEDS

- Stabilize
- Feed
- House
- Clothe
- Love

TOOLS

- Education
- Child Care
- Transportation
- Identification Documentation
- Job Searching Techniques and Tools

Unemployment rates and earnings by educational attainment, 2016



Note: Data are for persons age 25 and over. Earnings are for full-time wage and salary workers. Source: U.S. Bureau of Labor Statistics, Current Population Survey.

OPPORTUNIT

- Trauma Informed Career Placement at a sustainable wage

LNF Workforce Development Paths to Success

Life Launch Job Training

- 28 Weeks
- 18 young ladies / 11 young men
- 12 participants graduated
- Job Placement
 - Elderly Care
 - Janitorial
 - Youth Advocacy
 - Accounting
 - Retail
 - Real Estate
- One high school diploma, Beauty school completion, drivers license, business ownership, real estate enrollment, etc.

Love Never Fails Community Store

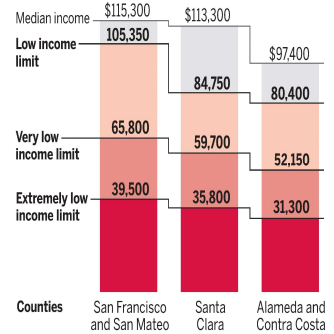
- 16 Employees since opening
- Partnership with AC Hire and La Familia
- Job Placement
 - Real Estate
 - Banking
 - IT
 - Restaurant
 - Security
 - Advocacy
- Two cars purchased, two licenses, and 3 apartments.

Career Development

- IT Academy via LNF/Hope/Ren
- 14 Weeks
- CCENT or COMP TIA A+
- Entrepreneurship Education
- Resume Writing and Interviewing
- Business Attire
- Job Placement
- BankWorks via Wells Fargo
- 8 Weeks
- Resume Writing and Interviewing Techniques
- Job Placement
- Real Estate Training via Century 21

REVISED LOW INCOME LIMITS

The U.S. Department of Housing and Urban Development has updated their income limits to indicate what is considered low income across different counties. In Alameda County, for example, a family of four is now considered low income on an \$80,000 per-year income, up from \$75,150 last year. San Francisco's limit is the highest, with \$105,000 per year for a four-person family considered low income.



Source: U.S. Department of Housing and Urban Development
BAY AREA NEWS GROUP



HOUSING

TRAFFICKING SURVIVOR #2 NEED

Bay Area Housing Crisis

- The Bay Area is one of the top 10 least affordable housing markets in the U.S.
- A family earning minimum wage needs to work over 142 hours a week year-round to afford a modest two-bedroom apartment.
- There was an article on homelessness in the Mercury news. It talked about a resident with multiple higher education degrees, including a master's in education, who supports the work of approximately 1,700 educators in West Contra Costa Unified School District in his position as president of the United Teachers of Richmond. His income is \$48,000. By the time he pays rent for a home he shares with four roommates, including teachers, along with student loans, food, travel, phone and car payments, he has about \$300 left each month.
- <http://www.mercurynews.com/2017/04/22/in-costly-bay-area-even-six-figure-salaries-are-considered-low-income/>

VMR(1)

Alameda County Homelessness

- Alameda County's homeless population grew by 39 percent over the past two years with **homelessness up to over 5600 people**.
- **Homeless children**
 - Suffer more health problems than housed children: 38% of homeless children have asthma.
 - Nearly 1/5 of homeless children repeat a grade in school because of mobility and related chronic absenteeism.
 - 16% are enrolled in special education classes....that's 33% higher than housed children (Institute for Children and Poverty, 2001)
- **Homeless adults**
 - Experience chronic health conditions such as TB, HIV/AIDS, diabetes and hypertension at a much higher rate than housed individuals and treatment is difficult without a stable environment.
 - They experience higher rates of violence and victimization including human trafficking.

Only **17%** of chronically absent kindergartners and first graders in California read proficiently by 3rd grade.

Students who don't read proficiently by 3rd grade are **4 times** more likely to drop out of school.

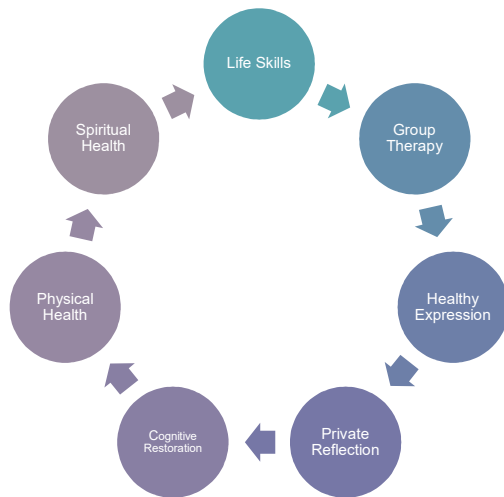
CSEC FAMILY VULNERABILITIES

Abandonment by parents or primary caregivers	55%
Lack of supervision by parents or caregivers	50%
Living in transient household	21%
Out-of-home (foster care) placement disruptions	48%
Parent or caregiver substance use	11%
Contact with or involvement in parents' criminal activities	23%
Involvement with or exposure to parents' prostitution activity	15%

http://www.westcoastcc.org/WCC_SEM_Needs-and-Strengths_FINAL.pdf

TRAUMA INFORMED HOUSING

HOUSING PHILOSOPHY



- Priorities: Health, Family, Education/Work, & Social Life.
- Sober living: No drugs and alcohol.
- Safe environment: No violence, threats, etc.
- Confidential Location.
- Housing Phases
 - First 30 Days Phase 1.0 : Dim Out
 - 6 Months– Phase 1.5 : Stabilization
 - 12 Months– Phase 2.0: Sustainability
 - Post Graduation - Phase 3: Independent Living



HEALTH

TRAFFICKING SURVIVOR #3 NEED

- On March 31, one man wrote:
- *“This girl has a developmental disability and is being used by her mother. Even mongers, need to draw a line somewhere. It can be argued that her disability means she doesn’t really know what she is consenting to. This is not like a woman who has demons (that) she should have known better to avoid. This is someone who is fully being abused by a parent.”*
- Upon seeing this review and the accompanying advertisement, I took a break from editing my book and immediately alerted the Winston-Salem and Thomasville police. Since the advertisement didn’t include a specific address, the police officers I spoke with weren’t sure which jurisdiction the case fell under.
- I was uncertain whether the information from the websites was reliable, but on the off-chance it was, I wanted to report it to the police.
- Within minutes of notifying law enforcement, the advertisements for this girl were removed from their website.
- Less than two hours later, by approximately 11:30pm, the police had conducted an undercover sting at a hotel and had the girl from the advertisements in custody. One of the officers confirmed to me that the woman appeared to suffer from a developmental disability.
- <https://thecrimereport.org/2017/05/17/sex-trafficking-a-surprising-rescue-story/>

SEX TRAFFICKING HEALTH IMPACTS

- Physical health problems associated with...
 - Physical beatings including wound care and broken bones
 - Rape
- Reproductive health problems, including exposure to HIV and other STDs, pregnancies, and fertility issues.
- Malnutrition

<http://aspe.hhs.gov/hsp/07/humantrafficking/ResFac/ib.pdf>

Power & Control

	Coercion, Threats & Purposeful Manipulation <ul style="list-style-type: none"> •Threatening Friends and Family •Harming another person for victim's disobedience •Learning & Exploiting Victims Insecurities
	Isolation and Emotional Violence <ul style="list-style-type: none"> •Isolating victim from support system •Shaming and humiliating •Unfamiliar/Unaware with geographic location
	Sexual and Physical Violence <ul style="list-style-type: none"> •Torture, Branding, Tattooing victim •Forced Drug Use, Denying Food or Bathroom •Rape and/or Forced into Human Trafficking
	Economic Dependence <ul style="list-style-type: none"> •Refusing to Allow Victim to Go to school or work •Taking Money & Belongings from Victim •Give money to family for "right to abuse" victim

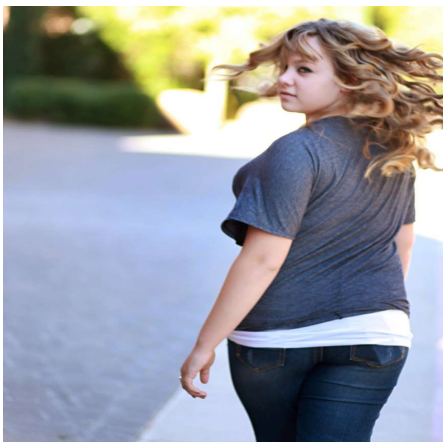
CSEC MENTAL HEALTH IMPACT

Depression	76%
Anxiety	55%
Anger Control	58%
Attachment Disorder	51%
Oppositional Behavior	46%
Affect Regulation	43%
Attention Deficit/Impulse Control	26%
Somatization	8%
Psychosis	4%
Eating Disturbance	2%



http://www.westcoastcc.org/WCC_SEM_Needs-and-Strengths_FINAL.pdf

Mental Health Challenges



- Stages of Change
- Trauma Bond

STAGES OF CHANGE



PRECONTEMPLATION STAGE

During the precontemplation stage, patients do not even consider changing. Smokers who are "in denial" may not see that the advice applies to them personally. Patients with high cholesterol levels may feel "immune" to the health problems that strike others. Obese patients may have tried unsuccessfully so many times to lose weight that they have simply given up.

CONTEMPLATION STAGE

During the contemplation stage, patients are ambivalent about changing. Giving up an enjoyed behavior causes them to feel a sense of loss despite the perceived gain. During this stage, patients assess barriers (e.g., time, expense, hassle, fear, "I know I need to, doc, but ...") as well as the benefits of change.

PREPARATION STAGE

During the preparation stage, patients prepare to make a specific change. They may experiment with small changes as their determination to change increases. For example, sampling low-fat foods may be an experimentation with or a move toward greater dietary modification. Switching to a different brand of cigarettes or decreasing their drinking signals that they have decided a change is needed.

ACTION STAGE

The action stage is the one that most physicians are eager to see their patients reach. Many failed New Year's resolutions provide evidence that if the prior stages have been glossed over, action itself is often not enough. Any action taken by patients should be praised because it demonstrates the desire for lifestyle change.

MAINTENANCE AND RELAPSE PREVENTION

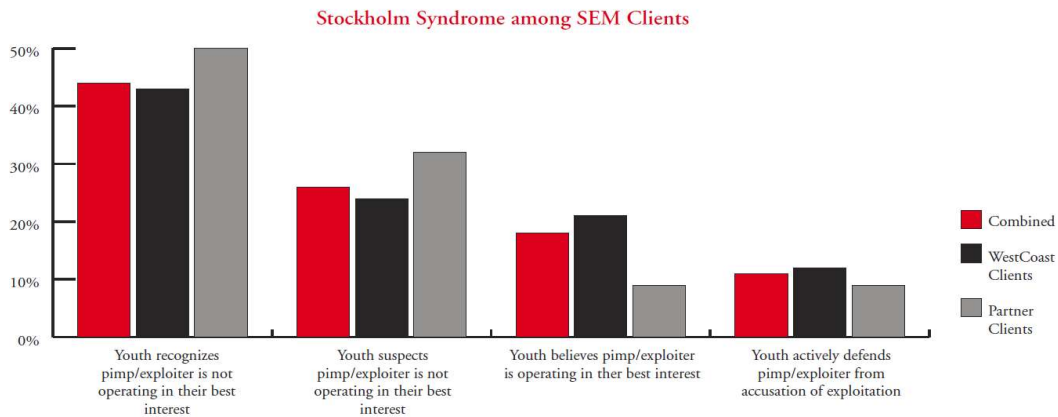
Maintenance and relapse prevention involve incorporating the new behavior "over the long haul." Discouragement over occasional "slips" may halt the change process and result in the patient giving up. However, most patients find themselves "recycling" through the stages of change several times before the change becomes truly established.

Stockholm Syndrome/Trauma Bond

"In cases where Stockholm syndrome has occurred, the captive is in a situation where the captor has stripped nearly all forms of independence and gained control of the victim's life, as well as basic needs for survival. Some experts say that the hostage regresses to, perhaps, a state of infancy; the captive must cry for food, remain silent, and exist in an extreme state of dependence. In contrast, the perpetrator serves as a mother figure protecting her child from a threatening outside world, including law enforcement's deadly weapons. The victim then begins a struggle for survival, both relying on and identifying with the captor."

([Fabrique, Romano, Vecchi, & Van Hasselt, 2007](#))

TRAUMA BONDING



http://www.westcoastcc.org/WCC_SEM_Needs-and-Strengths_FINAL.pdf

Six Key Take Aways

1. Become Familiar with the Red Flags and Report suspicious behavior to the National Human Trafficking Hotline – 888-3737-888
2. Talk to your local community and family about Human Trafficking – Use LNF PSAs to start the conversation <https://vimeo.com/loveneverfailsus>
3. Change your terminology –They are not prostitutes or criminals...they are victims of grave trauma; survivors of human trafficking or CSEC.
4. Understand the Social Media landscape and the impacts to our youth.
5. Support our school based prevention education efforts with PROTECT Statewide www.protectnow.org
6. Support local Non-profits like Love Never Fails. www.loveneverfailsus.com



Supporting Human Trafficking Survivors with Disabilities

A workshop especially designed for legal, health care and social service providers, educators and those work to stop human trafficking.
Facilitated by Alice Chiu (Asian Women's Shelter).



**Tuesday, February 6, 2018, 10-1130a.
25 Van Ness #70**

Co sponsors:

Anti-Trafficking Collaborative of the Bay Area (ATCBA),
SF City Department on the Status of Women,
and SFDPH's Newcomers CONNECT Project.

 **LOVE NEVER FAILS**

Thank you!