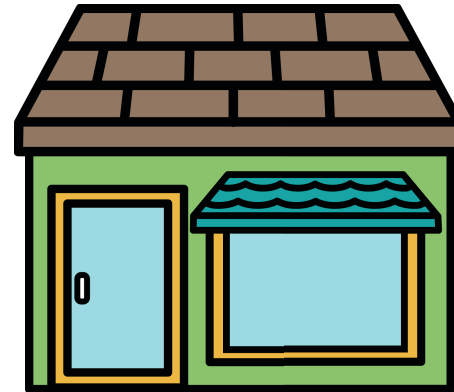


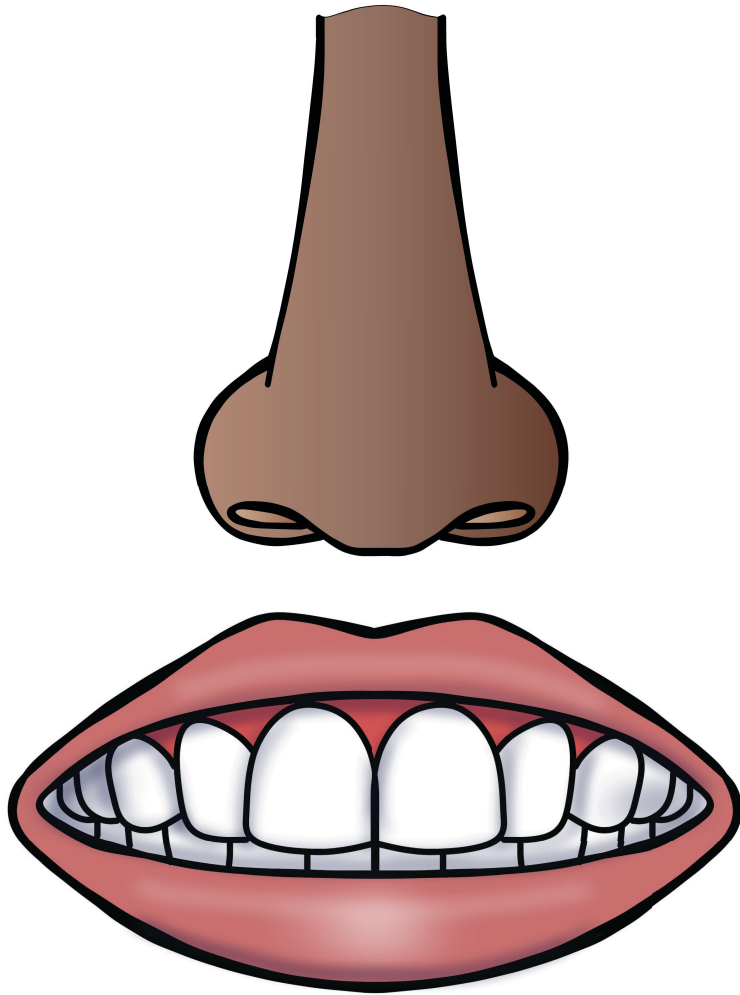
Why does my social worker look different?



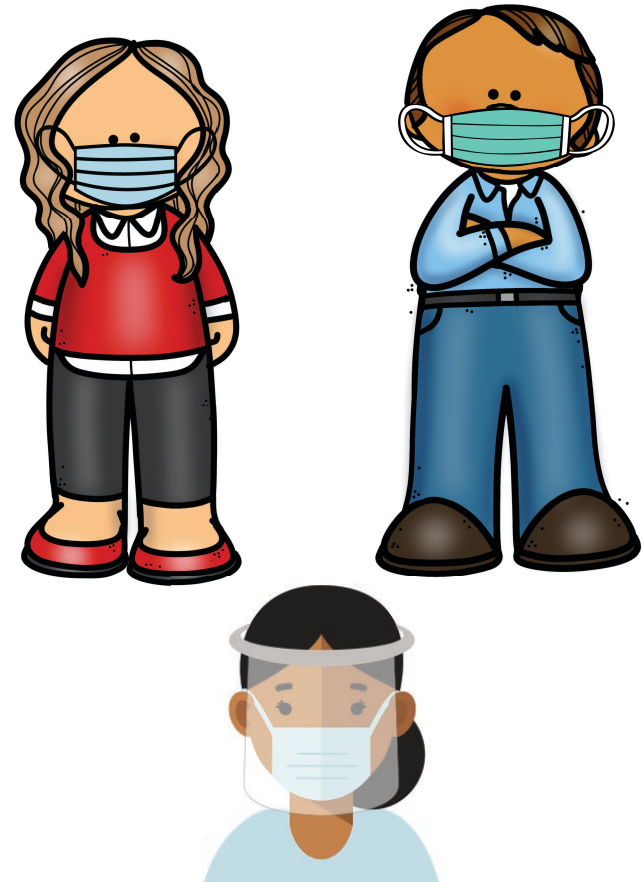
A Story for Children



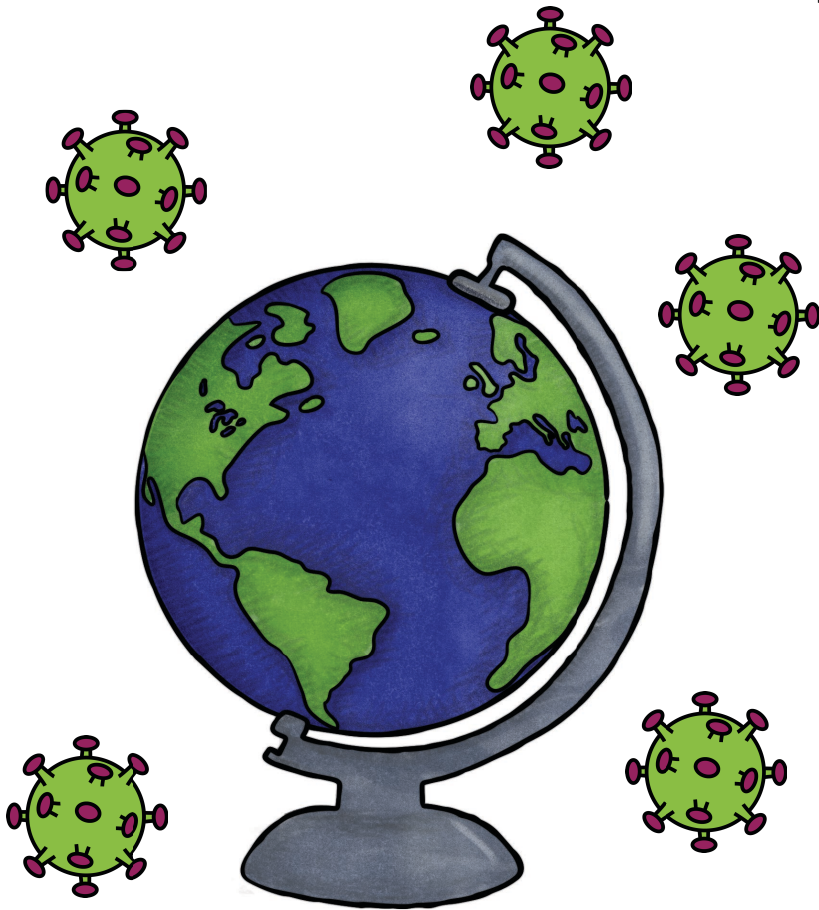
I have an appointment
with my social worker.



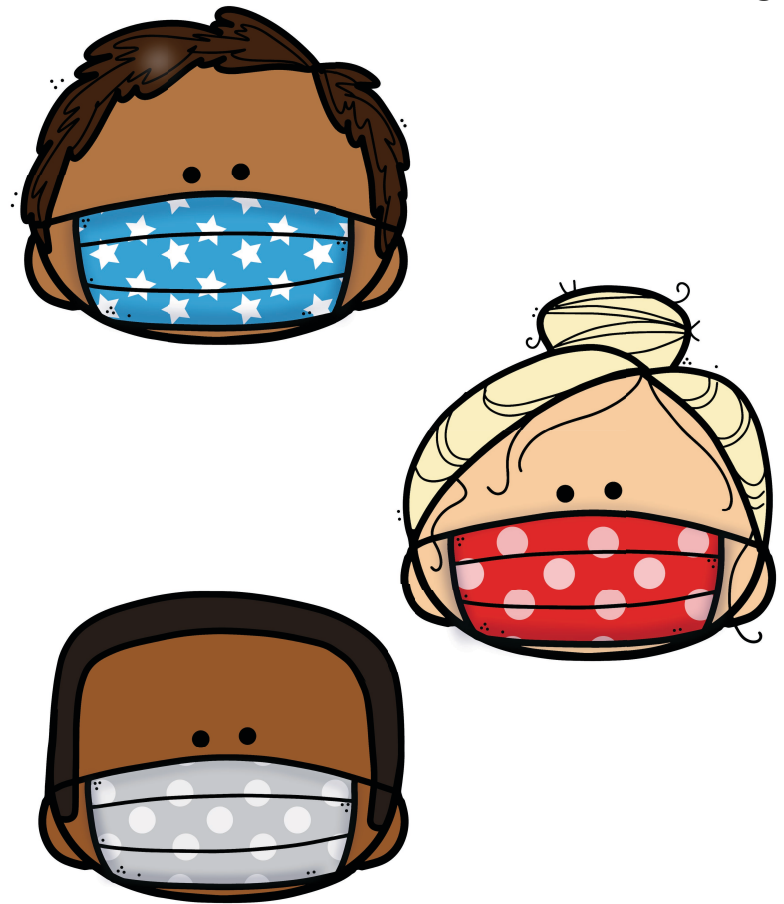
Usually I can see my social worker's nose and mouth.



But now, my social worker must wear a mask. The mask covers his or her nose and mouth. They might even be wearing a face shield



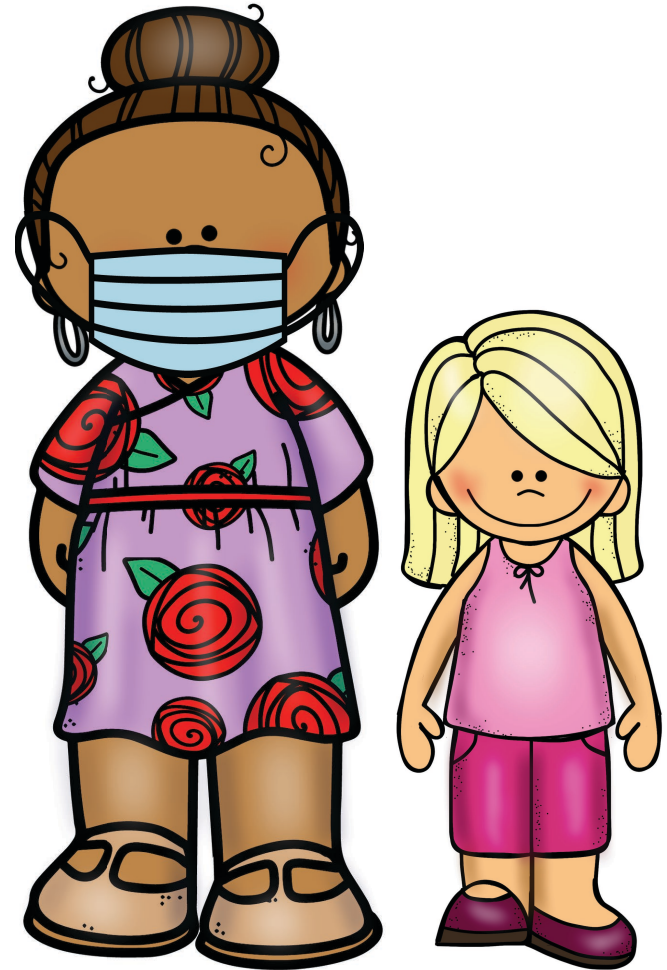
There a virus called
Coronavirus going around the
world right now. It makes
some people get sick.



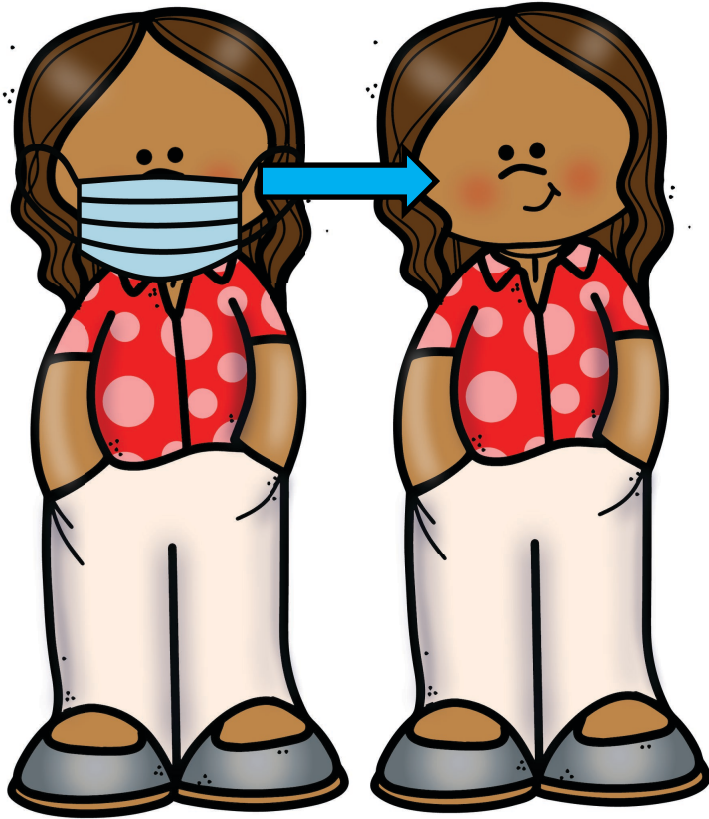
I've probably seen a lot of
people wearing masks lately!
Masks help prevent people
from getting sick.



It will be different to see my
social worker wearing a mask.



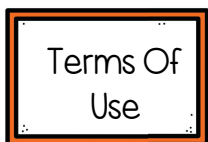
But, we will both get used to it!



I can remember that my social worker's nose and mouth are still under the mask.



Sometimes I can look at my social worker's eyes and I can tell he or she is smiling at me!



Terms Of Use



AUTISM little LEARNERS

Resources and ideas for families *and* educators

Copyright © 2020

This product is free, and I give you permission to distribute, copy and use for educational purposes. You may not post it as your own. Please give credit to Autism Little Learners or Tara Tuchel and refer people to my website:

www.autismlittlelearners.com

AUTISM little LEARNERS
WEBSITE/BLOG



Instagram



Connect!



Credits



Thank you for purchasing this activity from my store! I hope you find these materials as useful as I have in my classroom. Be sure to come back for newly added products!

♥ taraTUCHEL



Thank You!