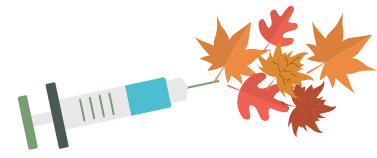


# HAPPY FALL

From Alameda County Public Health Department's Immunization Program



## IMMUNIZATION REMINDERS FOR ADULT PROVIDERS

Two newer vaccines for adults that are different from their predecessors...

	HEPLISAV-B – to protect from Hepatitis B	Shingrix – to protect from Shingles
CPT Code	90739	90750
Manufacturer	Dynavax	Glaxo Smith Kline
Dose Schedule	<b>2-dose</b> series, administered <b>1 month</b> apart	<b>2-dose</b> series, administered <b>2-6 months</b> apart
How to Store	<b>Refrigerate</b> (between 2°C to 8°C (36°F to 46°F))	<b>Refrigerate</b> (between 2°C to 8°C (36°F to 46°F)) DO NOT STORE IN FREEZER
How to Administer	Intramuscular (IM) injection (.5 ml each)	Intramuscular (IM) injection (.5 ml each)
Who Should Get This Vaccine	<p>Approved for adults, age 18 and over. Especially important for:</p> <ul style="list-style-type: none"> <li>• People whose sex partners have hepatitis B</li> <li>• Those with multiple sex partners</li> <li>• Those seeking evaluation or treatment for an STD</li> <li>• Men who have sexual contact with other men</li> <li>• People who share needles, syringes, or other drug-injection equipment</li> <li>• People who have household contact with someone infected with the hepatitis B virus</li> <li>• Health care and public safety workers at risk for exposure to blood or body fluids</li> <li>• Victims of sexual assault or abuse</li> <li>• Travelers to regions with increased rates of hepatitis B</li> <li>• People with chronic liver disease, kidney disease, HIV infection, or diabetes</li> <li>• Anyone who wants to be protected from hepatitis B</li> </ul>	<p>Approved for all adults, age 50 and over, including those who have had shingles, those who received Zostavax, and those unsure if they had chicken pox.</p> <p><b>Note:</b> Patients are more likely to experience local reactions or side effects such as pain, redness, swelling and systemic reactions such as myalgia, fatigue or headache that may interrupt regular activities for a few days. The reactions or side effects, however, will be less severe than having shingles or complications from the disease.</p>

### Flu & Tdap

**Influenza:** CDC recommends a yearly flu vaccine for everyone 6 months of age and older. All licensed health care facilities in Alameda County and the City of Berkeley require their health care workers (HCWs) to receive an annual influenza vaccination or, if they decline, to wear a mask during every influenza season while working in patient care areas. Influenza season dates are defined as November 1 to April 30 of the following year. See the Alameda County and City of Berkeley joint masking order at <http://www.acphd.org/health-alerts.aspx>.

**Tdap:** Make sure that all pregnant women receive the Tdap vaccine in their third trimester of each pregnancy. This is our best bet to prevent infant deaths.

### Trainings

December 12th, 2018 Immunization Skills Institute Training for Medical Assistants <http://www.acphd.org/iz/events.aspx>  
 Online Hepatitis B Training for Providers <http://med.stanford.edu/liver/resources/onlinetraining.html>

**Thank you for doing your part to increase Community Immunity!**

[www.acphd.org/iz](http://www.acphd.org/iz)

Alameda County Public Health Department

Immunization Program

1000 Broadway, Suite 500

Oakland, Ca 94607

(510) 267-3230