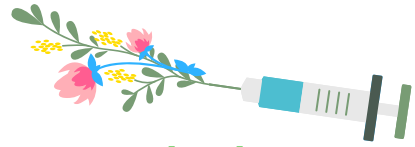


# HAPPY SPRING



From Alameda County Public Health Department's Immunization Program

## IMMUNIZATION REMINDERS FOR Adult PROVIDERS

- A California infant tragically died from pertussis last month. The Alameda County Public Health Department and the Alameda Alliance for Health have been working together to ensure that no infant cases or deaths from this dangerous disease occur in our jurisdiction. Infants are best protected by vaccinating pregnant women with Tdap vaccine at 27-36 weeks gestation, every pregnancy. A local guide of best practices for administering Tdap is posted at [www.acphd.org/iz/projects](http://www.acphd.org/iz/projects).
- The 2019 Adult Immunization Schedule added homelessness as an indication for hepatitis A vaccination and the CDC just published data saying there is a nearly 300% increase of hepatitis A cases among adults in the last 5 years. Please be sure to keep hepatitis A vaccine on your radar for adult patients. All updated schedules are posted at [www.cdc.gov/vaccines/schedules](http://www.cdc.gov/vaccines/schedules).

**Please Join Us on June 5 for Our  
2019 Immunization Update in Oakland!**

Learn More and Register at:

<http://www.acphd.org/iz/events>

We are dedicated to improving our community's knowledge of and access to vaccinations by providing information and **supporting providers like you.**

### We are your local immunization resource!

We provide immunization outreach materials, can help you with reminder/recall activities, provide technical assistance to help improve coverage rates, and can help you with the CAIR2 Immunization Registry.

[www.acphd.org/iz](http://www.acphd.org/iz)

- The U.S. is currently experiencing the greatest number of measles cases since the disease was declared eliminated in the year 2000. Bay Area clinicians are requested to consider/suspect measles in patients with a rash and fever  $\geq 101^{\circ}\text{F}$  ( $38.3^{\circ}\text{C}$ ) regardless of travel history. Ask about measles vaccination and exposure to known measles cases, international travel, or international visitors in the three weeks prior to illness. See our full clinician advisory at [www.acphd.org/health-alerts](http://www.acphd.org/health-alerts)

**Thank you for doing your part to increase Community Immunity!**

[www.acphd.org/iz](http://www.acphd.org/iz)

Alameda County Public Health Department

Immunization Program

1000 Broadway, Suite 500

Oakland, CA 94607

510-267-3230

May 2019