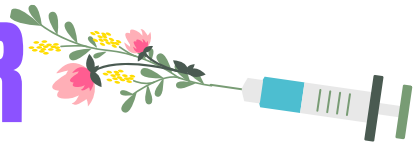




HAPPY SUMMER



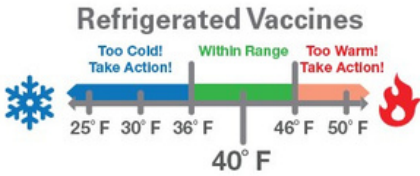
From Alameda County Public Health Department's Immunization Program

IMMUNIZATION REMINDERS

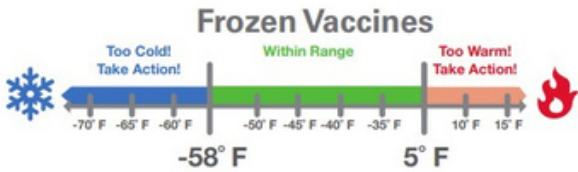


Never freeze refrigerated vaccines!

Exception: MMR can be stored in refrigerator or freezer



Report out-of-range temperatures immediately!



- Immediately take action if temperatures are out of range:
 - Contact your state/local health department immediately. Or for private vaccines, call the manufacturer directly.
 - Notify the practice's vaccine coordinator to get the refrigerator temp back in range
 - For more information: <https://www.cdc.gov>
- In Alameda County in 2021, approximately 15,378 doses of vaccines were wasted due to refrigerators being too cold or too warm and from expiration due to mismanagement. This totaled to over \$299,915 wasted. Vaccines are valuable - please make sure it is treated as such!
 - Strategies to prevent future vaccine wastage:
 - Place the vaccines in trays or containers for proper air flow.
 - Rotate Stock as needed, and follow a "first in, first out" strategy to manage inventory.
 - Monitor expiration dates weekly.
 - Visit www.eziz.org for more information.
- In Alameda County there are a variety of county and community clinics that serve residents. For a list of Immunization Clinics please visit <https://acphd.org/clinics/>

The shots for school website is now located on the [CDPH website](#).
shorturl.at/acIVY

We provide [immunization outreach materials](#), shorturl.at/dfGP4, provide technical assistance to help improve coverage rates, and can help you with the [CAIR2 Immunization Registry](#).

- Medical exemptions issued in 2021 and beyond must be issued using CAIR-Me. All California health care providers (MD and DO) are required to submit new immunization-related medical exemptions (ME) on behalf of children enrolled at California's K-12 schools and childcare agencies electronically via the CDPH CAIR Medical Exemptions from web portal: <https://cair.cdph.ca.gov/exemptions/home>.
- Current users of CAIR2 will still need to register to use CAIR-ME. For more information go to [CDPH website](#) at shorturl.at/EMNTW
- Documents such as written letters and lab results about immunity are not sufficient for childcare and school admission purposes.
- Physicians and medical group partners can be directed to the [CAIR-ME Physician Webinar](#) at shorturl.at/ahry0
 - [Medical Exemption Requirements Presentation](#) shorturl.at/jlqY4

Thank you for doing your part to increase Community Immunity!

<https://acphd.org/immunization-program/>

Alameda County Public Health Department
Immunization Program
1100 San Leandro Blvd.
San Leandro, CA 94577

(510) 267-3230

September 2022