

Vaccine Preventable Disease

Alameda County



Erica Pan, MD, MPH, FAAP
Deputy Health Officer

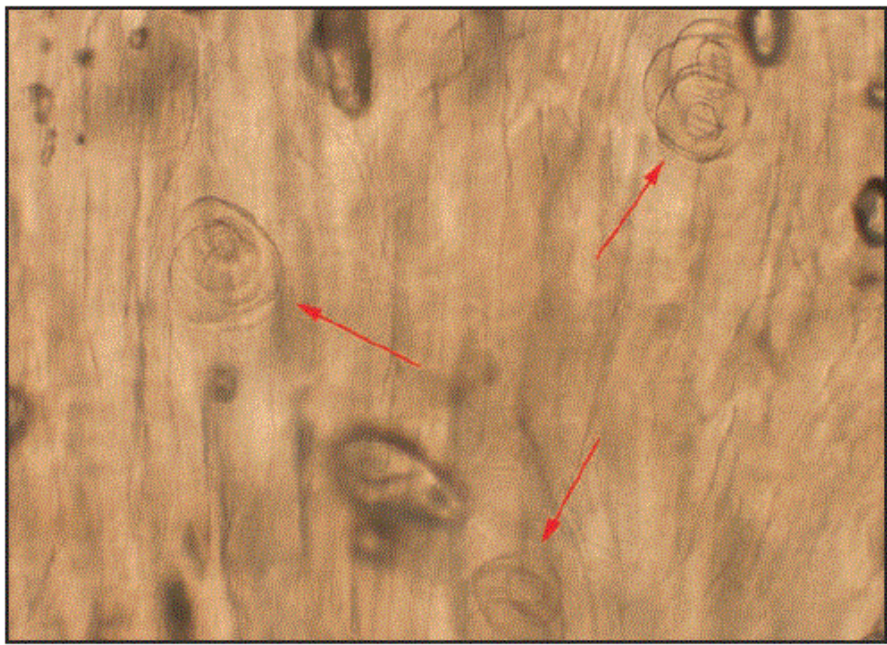
Director, Division of Communicable Disease Control and Prevention
Alameda County Public Health Department



Clinical Professor
Pediatric Infectious Diseases



Disease Reporting – Clinicians Make the Difference



CDC Centers for Disease Control and Prevention
CDC 24/7: Saving Lives, Protecting People™

☒ Search MMWR Only

Morbidity and Mortality Weekly Report (*MMWR*)

[CDC](#) > [MMWR](#)

Trichinellosis Outbreak Linked to Consumption of Privately Raised Raw Boar Meat — California, 2017

Weekly / March 2, 2018 / 67(8);247–249



Dustin Heaton, MSN¹; Sandra Huang, MD¹; Rita Shiau, MPH¹; Shannon Casillas, MPH²; Anne Straily, DVM²; Li Kuo Kong, MD³; Valerie Ng, MD, PhD⁴; Viviana Petru, MD⁵ ([View author affiliations](#))

Article Metr



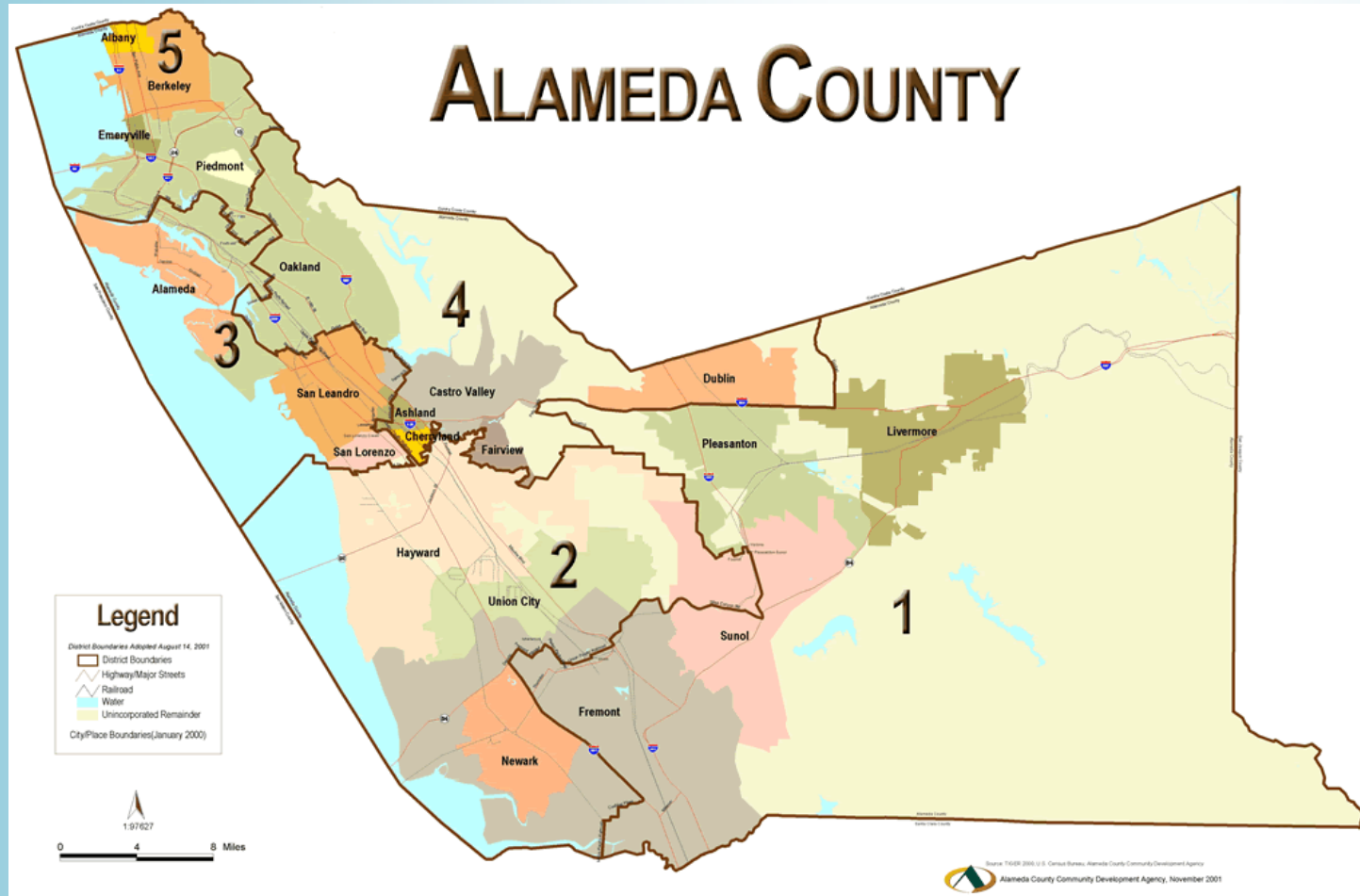
How/Where to Report

Report to local health jurisdiction where case resides

REPORT IMMEDIATELY BY PHONE During Business hours: (510) 267-3250 After hours: (925) 422-7595		
<ul style="list-style-type: none">• Anthrax, human or animal• Botulism (Infant, Foodborne, Wound, Other)• Brucellosis, human• Cholera• Ciguatera Fish Poisoning• Dengue• Diphtheria• Domoic Acid Poisoning (Amnesic Shellfish Poisoning)• Escherichia coli: shiga toxin producing (STEC), including E. coli 0157:H7	<ul style="list-style-type: none">• Foodborne Disease (when two or more cases or suspected cases of foodborne disease from separate households are suspected to have the same source of illness)• Hantavirus Infections• Hemolytic Uremic Syndrome• Measles (Rubeola)• Meningococcal Infections• Paralytic Shellfish Poisoning• Plague, Human or Animal	<ul style="list-style-type: none">• Rabies, Human or Animal• Scombroid Fish Poisoning• Severe Acute Respiratory Syndrome (SARS)• Shiga Toxin (detected in feces)• Smallpox (Variola)• Tularemia, human• Viral Hemorrhagic Fevers (Crimean-Congo, Ebola, Lassa and Marburg viruses)• Yellow Fever
Immediately by phone, report occurrence of any unusual disease OR outbreaks of any disease		

<http://www.acphd.org/communicable-disease/disease-reporting-and-control>

Vaccine Preventable Disease Highlights



- Hepatitis A
- Influenza
- Pertussis
- Human Papillomavirus
- Perinatal Hepatitis B

Vaccine Preventable Diseases in Alameda County

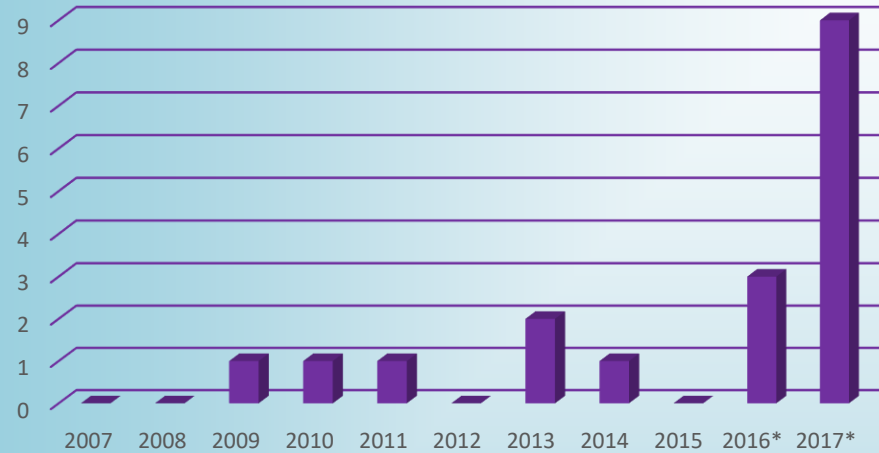
(annual counts)

Alameda County data for vaccine preventable diseases - yearly counts												
Disease	2007	2008	2009	2010	2011	2012	2013	2014	2015	2016*	2017*	Cumulative
Diphtheria	0	0	0	0	0	0	0	0	0	0	0	0
Polio	0	0	0	0	0	0	0	0	0	0	0	0
Rubella	0	0	0	0	0	0	0	1	0	0	0	1
Tetanus	1	0	0	0	0	0	0	0	0	0	1	2
Measles	0	0	0	1	0	0	0	4	6	0	0	11
Haemophilus influenzae type b (aged <15 years only)	0	2	2	0	2	2	1	2	2	2	1	16
Mumps	0	0	1	1	1	0	2	1	0	3	9	18
Varicella (hospitalizations and deaths only)	0	0	0	4	0	2	3	4	11	0	2	26
Influenza (2007-2010: pediatric deaths only; 2011-2017: deaths <65 yo only)	0	1	2	1	3	7	7	11	2	5	9	48
Meningococcal disease	9	4	4	2	3	7	5	5	2	4	4	49
Hepatitis A (acute)	7	20	3	7	4	4	6	8	7	8	12	86
Hepatitis B (acute)	21	14	7	4	5	7	5	6	2	11	7	89
Pertussis	54	58	32	412	211	63	127	355	185	77	112	1686
Pertussis rates (per 100,000)and 95%CI	3.9 (3.0- 5.2)	4.2 (3.2-5.4)	2.3 (1.6-3.2)	29.4 (26.7-32.4)	15.0 (13.0-17.1)	4.4 (3.4-5.7)	8.9 (7.4-10.6)	24.4 (22.0- 27.1)	12.6 (10.9-14.6)	5.1 (4.1-6.4)	7.3 (6.0- 8.8)	
									* provisional			

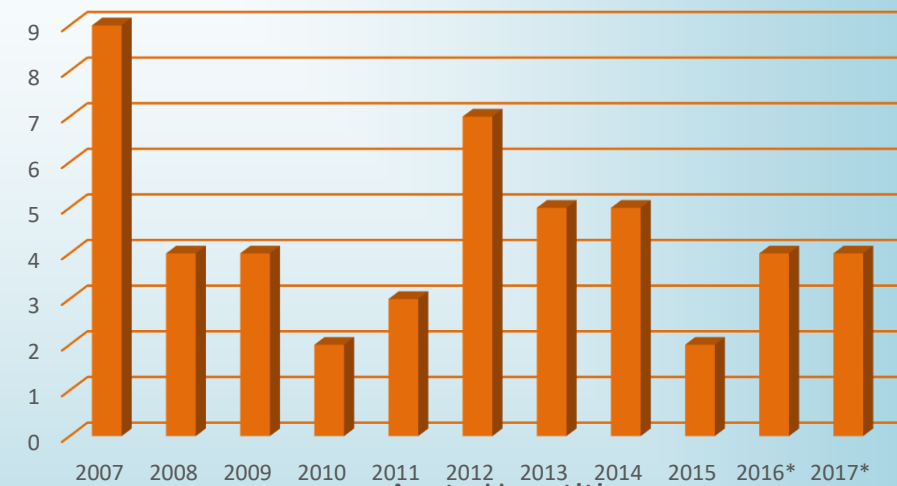
Vaccine Preventable Disease Cases

2007-2017

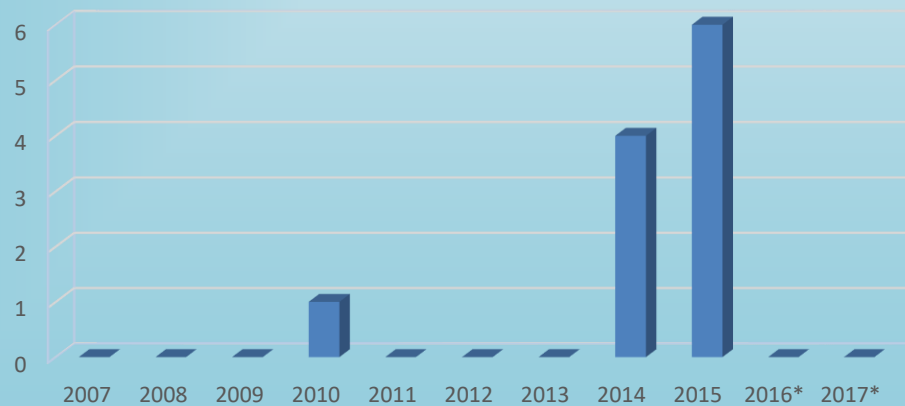
Mumps



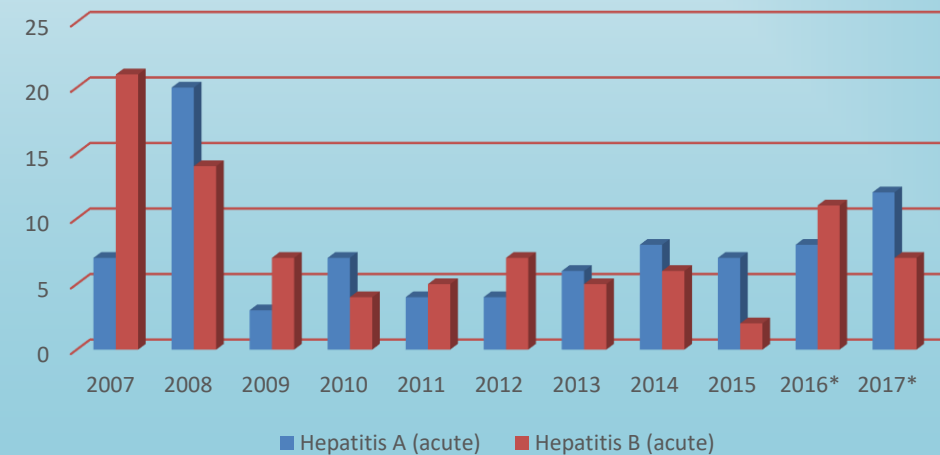
Meningococcal disease

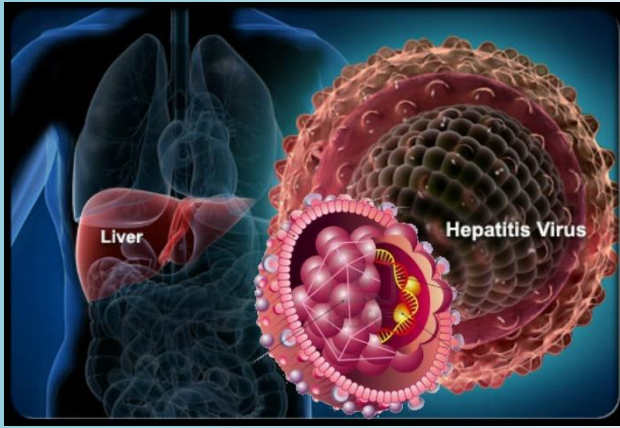


Measles



Acute Hepatitis



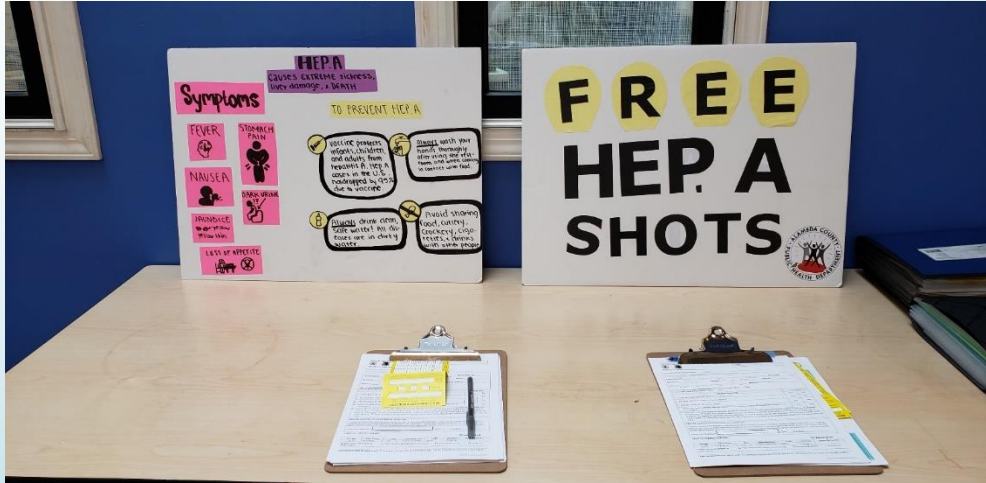


Hepatitis A

- Largest person-person outbreak in CA history
- Began in San Diego, spread to other counties
- Governor declared an emergency
- Majority of cases among homeless or illicit drug users
- We wanted to prevent an outbreak in Alameda County

Jurisdiction	Cases	Hospitalizations	Deaths
San Diego	587	402	20
Santa Cruz	76	33	1
Los Angeles	12	8	0
Monterey	12	10	0
Other	17	8	0
Total	704	461	21

Partnering with Community from December 2017-April 2018



- Developed handouts and Hep A info
- Trained **22** PH staff and ~**50** outreach workers
- Created a Field Operations Guide and followed Incident Command System (ICS) Principles



Hepatitis A Efforts

Visited **11** shelters, 6 encampments, 7 needle exchanges, 4 churches, 1 community event and 1 boys and girls club



Put on **30** events

Participating Organizations

Shelter	37%
Encampment	20%
Needle Exchange	23%
Churches	13%
Other (Events, Clubs)	7%

With partners we...vaccinated **687** people!

1,032 total
vaccines given
and distributed

1729 Total
Encounters

Average 45%
participation
rate

Hepatitis A vaccinations with Street Medicine





Hepatitis A vaccinations
at night with HEPPAC
3/22/2018



Influenza -- What to Report

Fatal Influenza Reporting < 65 years

- Lab-confirmed influenza in fatal cases ≤ 65 years old

Outbreaks or unusual occurrence

- In institution with ≥ 1 case of lab confirmed flu in the setting of a cluster (≥ 2) of ILI within 72h
- In institution or congregated living setting associated with hospitalization or fatalities
- Other public health importance
 - eg travel to area with novel flu, close swine/avian contact

Influenza

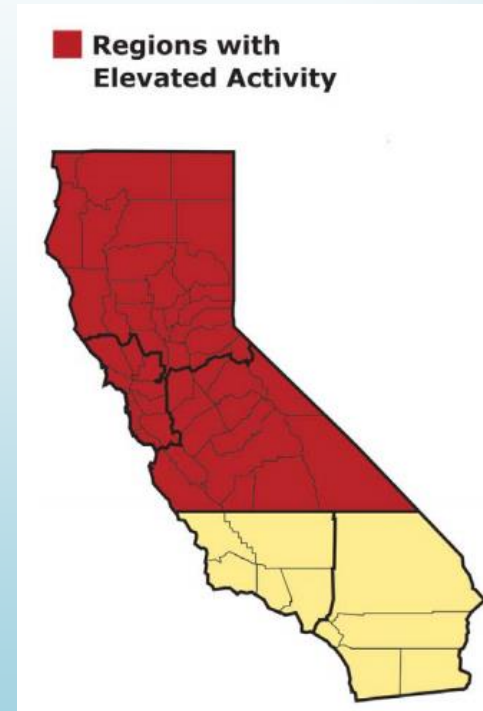
- Particularly bad year – surge was put to the test



Nov 26 – Dec 2, 2017



Dec 23, 2017 - March 17, 2018



March 25 – April 7, 2018



April 15 – April 28, 2018



Flu Advisory – Visitor Restrictions

Due to the severity of the current flu season, Alameda Health System is joining other local area hospitals with a visitor restriction protocol. We are committed to protecting patients and employees from respiratory infections, including the seasonal flu virus.

As a precautionary measure, children under the age of 18 and any person exhibiting respiratory symptoms such as fever, coughing, sneezing, etc., will be restricted from visiting our in-patients. Visitor restrictions do not apply to children or visitors in need of services.

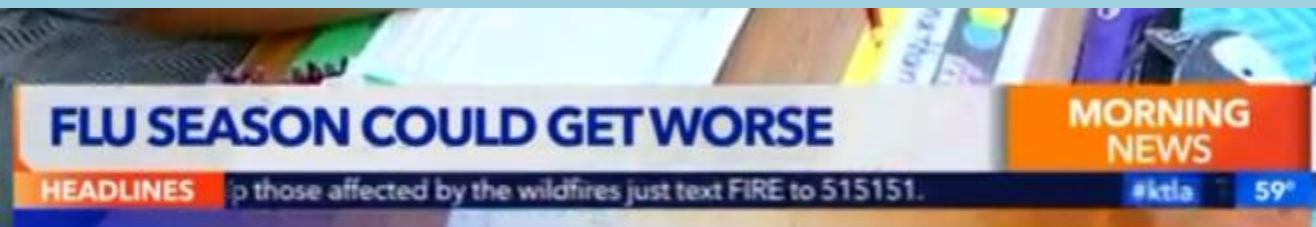
- Anyone coming into the hospital with flu or cold symptoms will be required to wear a mask
- Visitors should utilize the hand sanitizers provided throughout the facility both before and after patient contact
- Visitors should exercise cough etiquette by covering their coughs/sneezes, followed by proper hand hygiene



News > [California News](#)

This flu epidemic did something never recorded before

The entire nation is flu-stricken, and more stories are pouring in



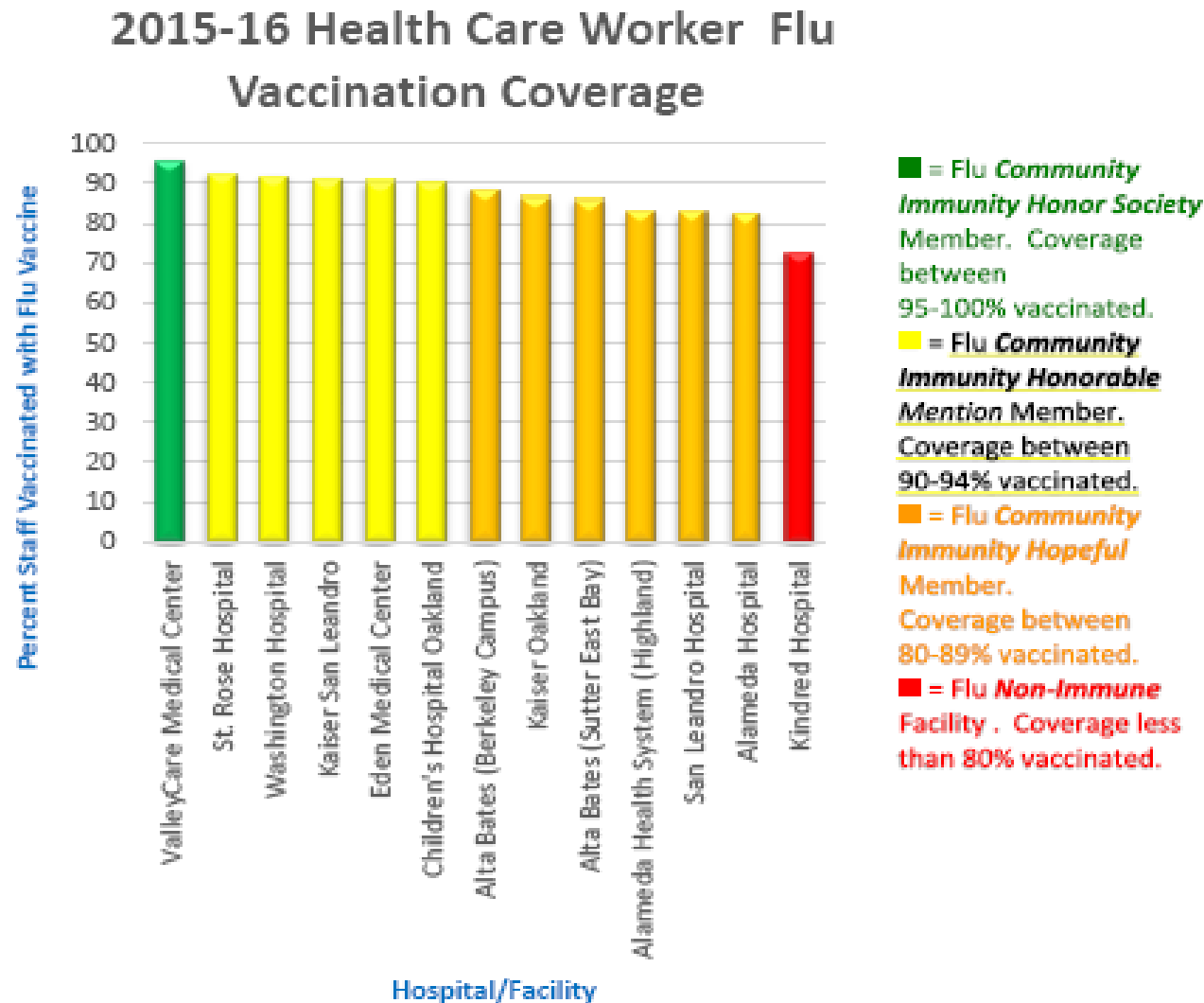
HEALTH


Flu 'War Zone' Cripples California Hospitals; Tents Set Up to Handle Influx of Patients

By Pam Wright · January 17 2018 11:30 AM EDT · [weather.com](#)


Influenza

Masking order within Alameda County and Bay Area was extended through April 30
(November 1 - April 30)





Muntu Davis, MD, MPH
County Health Officer
Alameda County Public Health Department
Alameda County Health Care Services Agency
(510) 267-8000
www.acphd.org



Robert Benjamin, MD, MPH
Interim Health Officer
Health, Housing & Community Services Department
Public Health Division
(510) 981-5300
www.ci.berkeley.ca.us/publichealth

Health Advisory

September, 2017

Mandatory Influenza Vaccination or Masking of Health Care Workers During Every Influenza Season

Current Situation

As Health Officers for Alameda County and the City of Berkeley, we are *updating* our joint Health Officer orders (originally dated Aug. 28, 2013) mandating that all licensed health care facilities in Alameda County and the City of Berkeley require their health care workers (HCWs) to receive an annual influenza vaccination or, if they decline, to wear a mask during every influenza season while working in patient care areas. This order applies to all facilities regardless of documented HCW influenza vaccination rate and the 2017 update defines Influenza Season as November 1 to April 30 of the following year. This order is ongoing and applies to each influenza season unless rescinded or modified.

Background Information

Influenza infection affects 5-15% of the US population every year, leading to an estimated 3.1 million days of hospitalization and 31.4 million outpatient visits. HCWs are both at risk for influenza and can transmit the virus to their patients and coworkers. Patients in our health care facilities are particularly vulnerable to influenza. Young children, the pregnant, the elderly, and those with chronic health conditions are at greater risk for influenza-related hospitalization and death. Healthy People 2020 objectives target a 90 percent seasonal influenza vaccination rate for all health care personnel.

In your role as a health care provider and ours as Health Officers, we share common goals: reduce spread of serious diseases such as influenza, provide outstanding health care, and protect our HCWs. State law requires that general acute care hospitals and certain employers offer influenza vaccinations to employees. If employees decline vaccination, they are only required to sign a declination statement in lieu of vaccination. While compliance rates with these laws are high, actual HCW vaccination rates are not and may be below the level that will reduce the spread of infection in our health care facilities. Mandatory vaccination or masking policies have been shown to increase HCW vaccination rates to above 95%. After our first year of mandating these policies in Alameda County and Berkeley, overall HCW flu vaccination rates increased from 72% to 86% in acute care inpatient facilities.

Please distribute to all providers in your practice

Influenza Vaccine Distribution and Programs

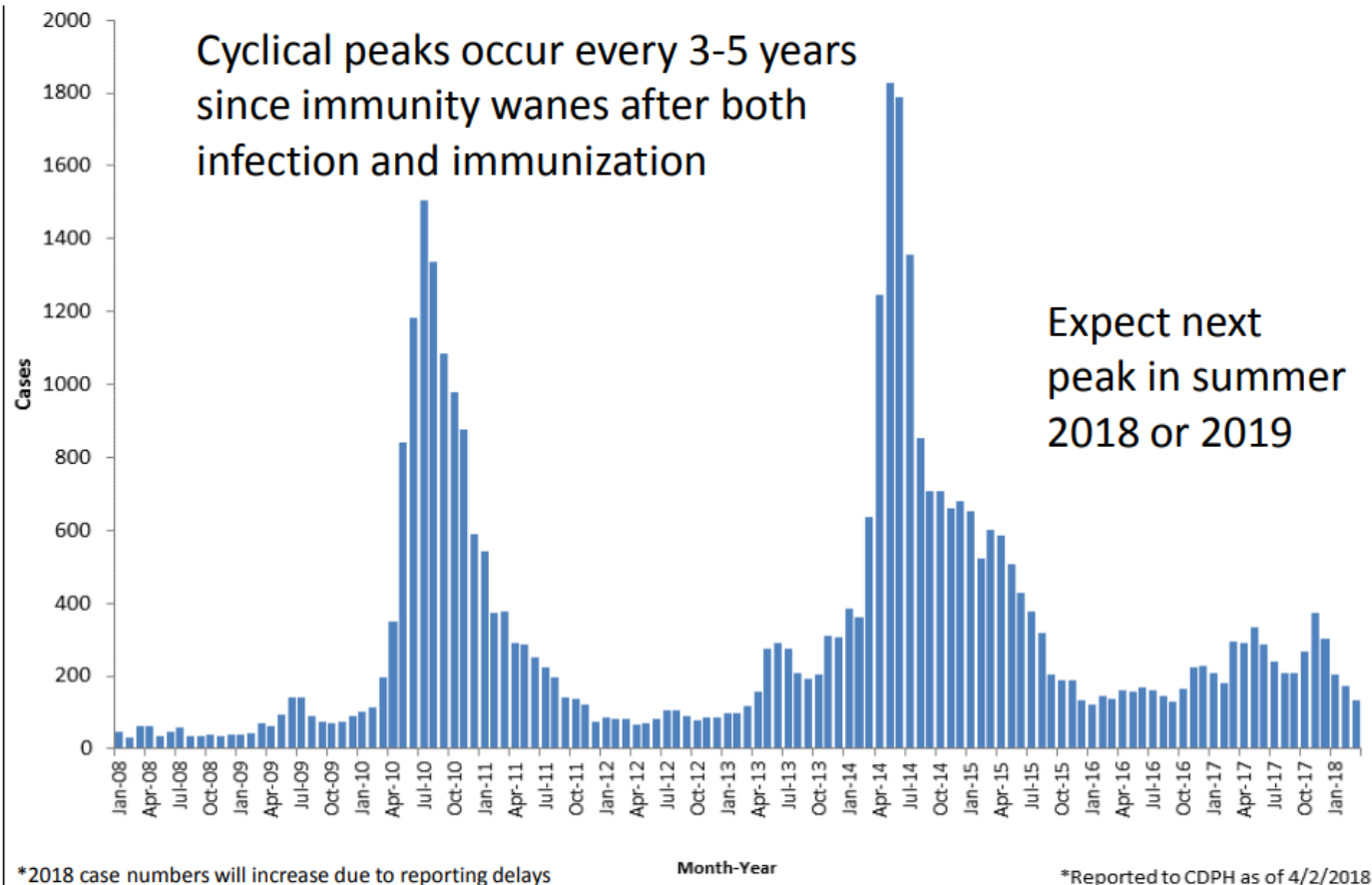
- Flu vaccine distribution program
 - For low-income, un- or under-insured adults
 - Visit <http://www.acphd.org/iz/projects/flu.aspx> to participate
- Shoo the Flu – School Located Influenza Clinic campaign–
 - Oakland and Piedmont schools
 - Since 2014, has vaccinated 37,465 students and staff
 - contact our IZ program at 510-267-3230 for more information



Pertussis Cycles – We're Due for another Epidemic

<https://www.cdph.ca.gov/Programs/CID/DCDC/Pages/Immunization/pertussis.aspx>

Pertussis Cases by Onset Date, CA, 2008-2018



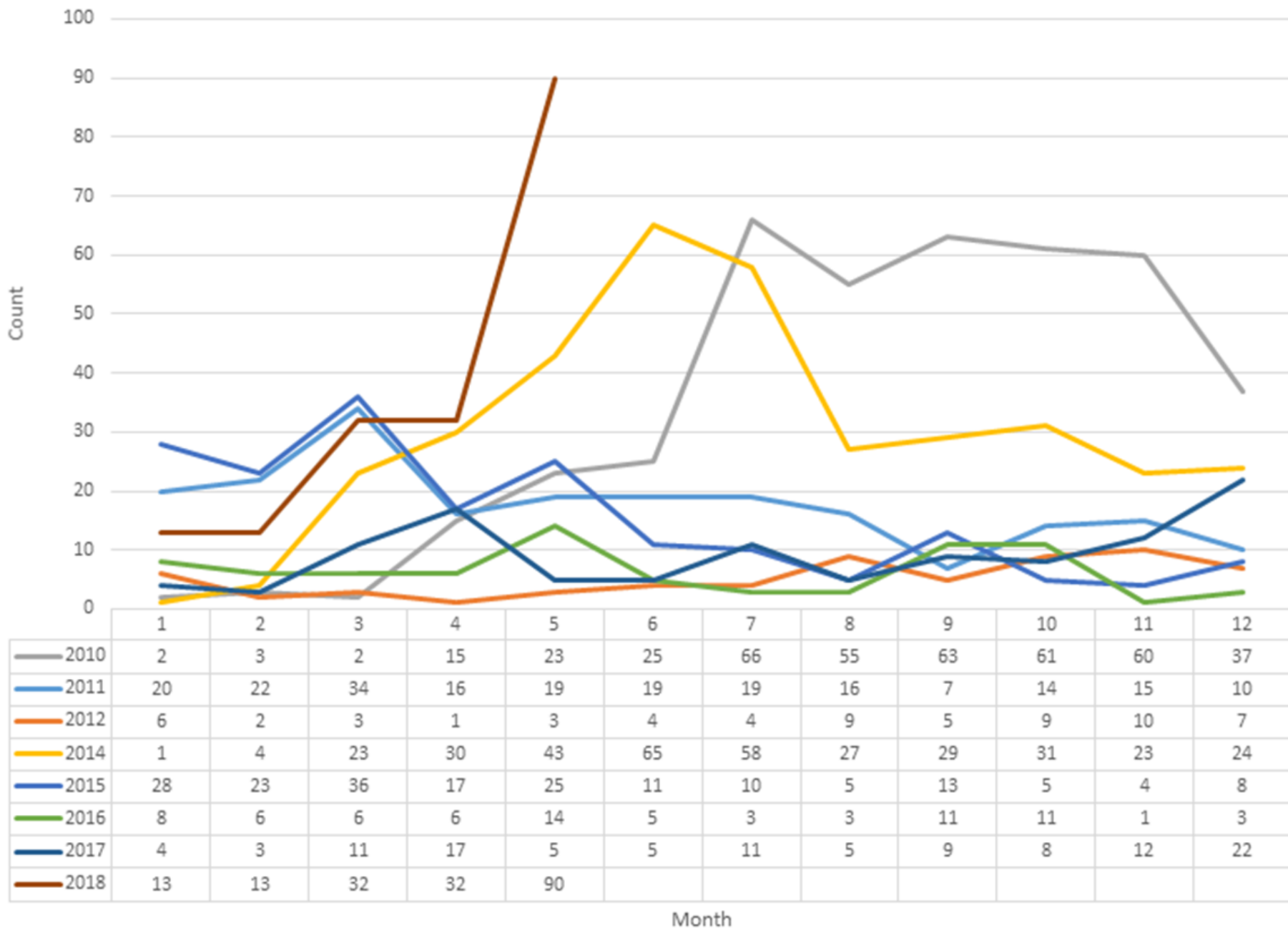
Alameda County – Pertussis Cases by Epidemic Year

Yr 2010	Yr 2014
412 cases	355 cases

Case counts from January to April are:

2010 Jan-Apr	22
2014 Jan-Apr	58
2017 Jan-Apr	35
2018 Jan-Apr	87

Pertussis cases by month and year of report, Alameda County, 2010 to 2018



ALAMEDA COUNTY HEALTH CARE SERVICES AGENCY
PUBLIC HEALTH DEPARTMENT
Division of Communicable Disease Control and Prevention
1600 Broadway, Ste 500
Oakland, CA 94612
Tel (510) 260-3250
Fax (510) 268-2111

Colleen Chawla, Director
Muntu Davis, MD, MPH, Director, Health Officer
Erica Pan, MD, MPH, Director & Deputy Health Officer
Sandra Huang, MD, Communicable Disease Controller

May 11th, 2018 Community Update: High levels of pertussis in Alameda County

What's the situation?

Pertussis, also known as whooping cough, is a contagious disease affecting the lungs. It is caused by a bacteria that can spread when an infected person coughs, sneezes or talks near to other people. Pertussis can affect people of all ages but infants younger than 6 months are at greatest risk for severe disease leading to hospitalization and death. The highest rates of pertussis are seen in infants who are too young to have received all their pertussis vaccines, and in teenagers 14 to 17 years old whose pertussis vaccine protection has "worn off".

Although thousands of cases of pertussis are reported each year in California, the numbers of cases peak every 3 to 5 years. California had large increases in pertussis in 2010 (over 9,000 cases and 10 infant deaths), 2014 (almost 11,000 cases and 2 infant deaths), and 2018 cases are currently increasing. Like the rest of California, Alameda County has also had large increases in pertussis cases in 2010, 2014, and early 2018. We've seen the most cases this year in high school-aged children.

We are issuing this update to inform the public of the current situation and raise awareness of the steps that the public can take to protect their health.

Pertussis facts

- The symptoms of pertussis vary by age. In school-aged children it starts with a cough and runny nose for one to two weeks. The cough worsens and the child might have rapid coughing spells or "fits" that end with a whooping sound or with vomiting. Young infants may not cough. Instead, infants may have spells where they stop breathing and their skin turns purplish or reddish. Adults with pertussis may have a cough that lasts for several weeks.
- People with pertussis can spread the disease from the time they get a runny nose until 3 weeks after their cough started, or until five days of taking the correct antibiotic.
- People with pertussis and their close contacts can prevent spreading the disease if they take the right antibiotics.

Tdap in last trimester of EVERY Pregnancy

- Best strategy to avoid infant deaths –
vaccinate @27-36 weeks during EVERY pregnancy
 - We're following up on infants <4 mos old
 - We want to make sure that ob/gyns find out about any missed opportunities
- What is your follow-up strategy if you do not have the vaccine?



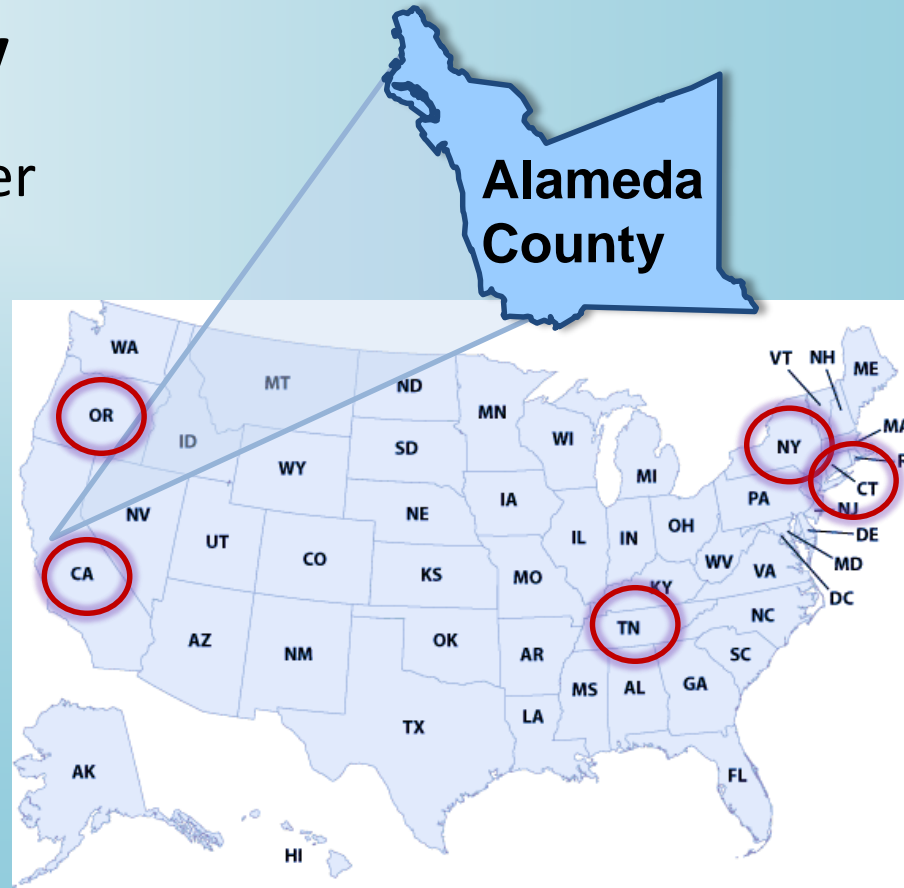
R_x	Prescriber Name, Address, Phone Number:
Patient Name: _____	Date: _____
Vaccines recommended during pregnancy:	
<input type="checkbox"/> Tdap (tetanus, diphtheria, pertussis [whooping cough]) during 3rd trimester 0.5 mL IM x 1	
<input type="checkbox"/> Inactivated Influenza 0.5 mL IM x 1	
Prescriber's Signature: _____ License #: _____	
These vaccines may be available from your primary care physician, local health department, or pharmacy. To find a nearby location, please visit www.vaccine.healthmap.org .	
Your baby is counting on you for protection. Get vaccinated.	
IMM-1143 (7/14)	



What is HPV-Impact?

Population-based surveillance of cervical pre-cancer to evaluate the impact of the HPV vaccines, by

1. Monitoring cervical pre-cancer
2. Monitoring HPV types
3. Tracking HPV vaccine history and cervical cancer screening



Cervical Pre-Cancer is a Reportable Condition in Alameda County

WHY?

Every year in California, HPV causes an estimated **5,200** cancers in men and women.

There were almost **1,400 cervical cancer cases** in California and over **470 deaths** from cervical cancer in 2014.

WHAT CAN PROVIDERS DO TO HELP?

- Ask and document **vaccination history**
- Complete HPV-Impact **Case Report Forms**
- Sign up for the **California Immunization Registry (CAIR)**

Incidence of cervical pre-cancer decreasing in women aged 18-24

N= 7,029



Note: 2016 data is preliminary.

ACPHD Perinatal Hep B Prevention Program

- Prevent transmission of Hep B virus:
 - Provide education to pregnant women w/chronic Hep B
 - Identify household contacts & refer to screen & evaluate
 - Maintain contact with mothers & MDs to ensure:
 - Hep B vaccine series is given
 - Post-vaccine serology is completed to assess immune status



Thank you for communicating with us about these patients!!

Thank You

Disease Reporting: 510-267-3250 (after hours) 925-422-7595

Immunization Questions: 510-267-3230

www.acphd.org